

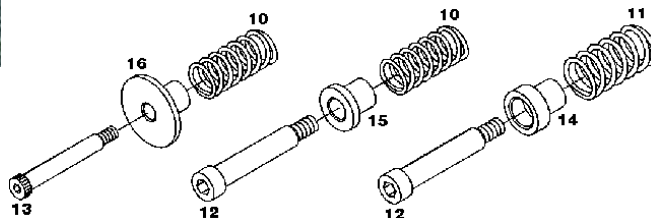
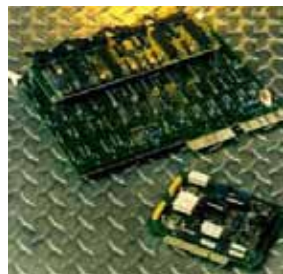
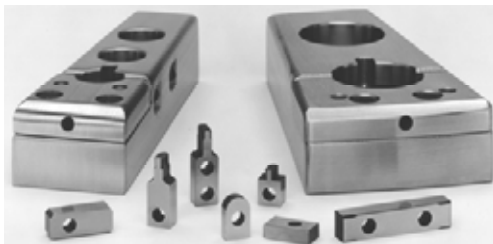


C.E. TOOLING

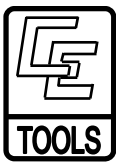
Section 11

Replacement Parts for Amada Machinery

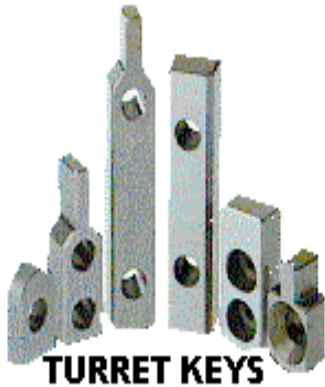
Save 10-70% off OEM pricing
Turrets, Lasers, Brakes, Shears



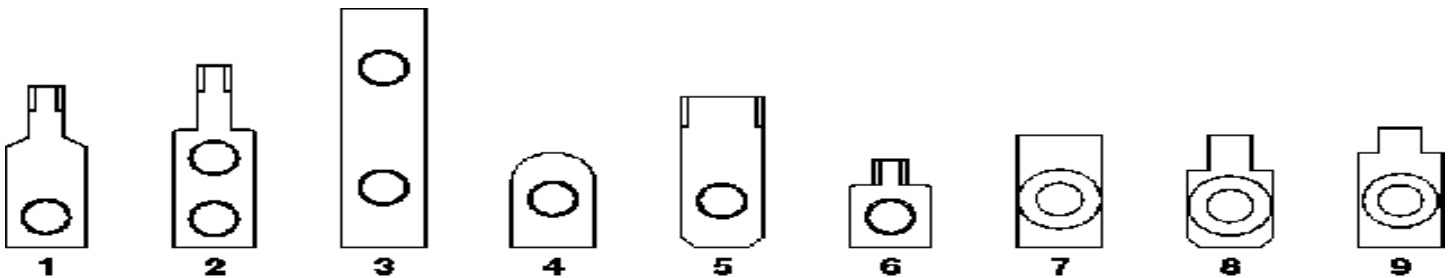
PRODUCTS INDEX <i>alphabetical</i>	Page
Adapters	8
Air Components	29-30
Alignment Tools : Align Die Holder to upper turret	4
Auto Index Parts	3
Ball Screw—LM Guide Rails	30
BEARINGS, BELTS	42
BRAKE PRESS –RG– PARTS	33&35
CONTROL Lights	31
CLAMP INDEX	9
Clutch Parts	32, 33
DIE HOLDERS	5
EJECTORS for Punches	6
FAN Parts	31
FILTERS	331
Grinding Wheels <i>for Amada Togu III & TG160</i>	6
HYDRAULIC PARTS	31
HOLDERS <i>Die & Punch-Guide Assemblies</i>	5-6
Keys	3
Lifter Springs, Rings, & Bolts	4
Lubrication	7 & 39
Limit Switches	3
LM Guide Rails	31
O-RINGS & Oil Seals	37
PNEUMATIC Tubing, Quick Disconnect fittings	28, 29
PRESS BRAKE-RG, WORK STOPPER ASSEMBLIES	35
SHEAR BLADES	7-8
Shims Punch & Die Sharpening Shims	5
STRIKER PARTS Shear Plates, Striker Punch, Back up Plates	6
Switches	39
Table Brushes & Lifter Balls, Transfer Balls	34
Tapping Unit for Turrets: NCT3	37
Timing Belts	37
TURRET Keys, Bushings, Lifter Springs, Shoulder Bolts,	3-4
TURRET <i>Restoration - Perma Sleeves</i>	38
Vipros Filters	31
Work Holder Clamp –Index	9



KEYS: Turret to Guide & Die Holder



Dwg	Part #	Amada Dwg #	Description	Price
1	*A3117	827263	Guide Key 1/2" , 1 1/4" Inner	
2	*A3118	5501007	Guide Key 1/2" , 1 1/4" Outer	
3	*A3119	5501050A	Guide Key 2"	
4	*A3120	5501010	Guide Key 3 1/2"	
5	*A3121	5501016A	Guide Key 4 1/2"	
6	*A3122	822420	Guide Key Auto Index	
7	*A3123	5500075	Guide Key Thin Turret - 3 1/2"	
N/A	*A3124	6532925	Guide Key Auto Index - 4 1/2" Vipros	
N/A	*A3125	828354	Guide Key 1/2" Inner-Vipros	
8	*A3141	488034C	Die Key Thick Turret	
N/A	*A0829	N/A	Screw M6 X M16 - 10 pcs	
9	*A3142	5500125	Die Key Thin Turret	

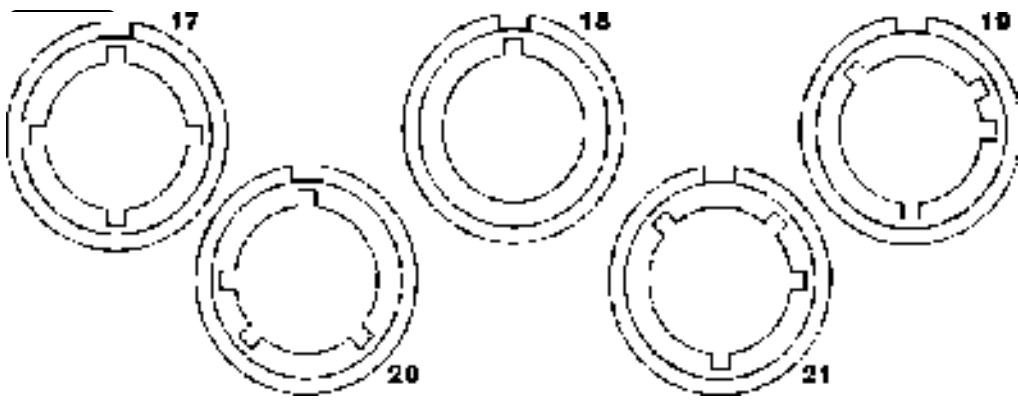


Auto Index Parts

Part #	Amada Dwg #	Description ₁₀	Price
*EA4700	822491/822077B	PP Spline and Gear	
*EA4701	822412D	Point Shaft: Drive Side	
*EA4702	822439B	Point Shaft: Driven Side	
*EA4703	811832A	Worm Shaft A	
*EA4704	802234D	Worm Shaft B	
*EA4705	822422C	Worm Wheel - Upper	
*EA4706	802244	Worm Wheel - Lower	
*EA4707	7932087A	Brake Cylinder	
*EA4708	822418E	Guide Holder	
*EA4709	821817A	Support	
*EA4710	N/A	Taper Pin	
*EA4711	N/A	Nut	
*EA9138	225-H100	Timing Belt	
*EA9220	AP - 12	O Ring	
*EA9228A	S - 28	O Ring	
*EA9230A	S - 35	O Ring	
*EA9230	AP - 32	O Ring	
*EA9422	6001Z	Bearing	
*EA9425	6004LU	Bearing	
*EA9436	6203Z	Bearing	
*EA9444	7001DB	Bearing	

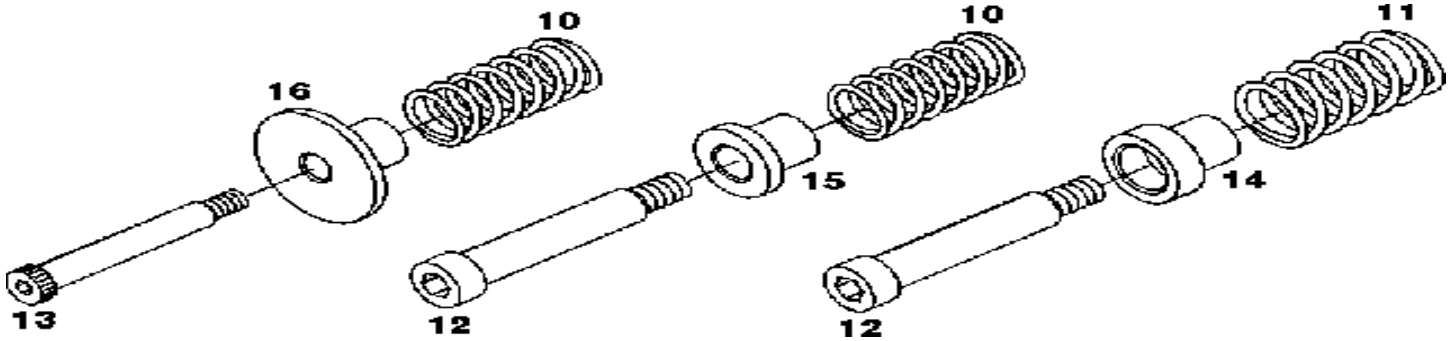
Limit Switches₁₀

Part #	Amada Dwg	Description	Price
POA6247	2LS1-J	Micro Switch	
POA6248	AT0-11-1-2B	Micro Switch	
POA6251	LDZ-5212	Micro Switch	
POA6253	SL1-A	Micro Switch	
POA6254	SL1-AFXG2	Micro Switch	
POA6255	SL1-H	Micro Switch	
POA6256	ZC-Q21	Micro Switch	
POA6257	ZC-Q22	Micro Switch	
POA6258	ZC-Q2255	Micro Switch	
POA6259	ZC-Q55	Micro Switch	
POA6260	SHL-Q2255	Micro Switch	
POA6261	LDZ 5000	Micro Switch	
POA6265	LSP1E	Micro Switch	
POA6268	ASJ209	Micro Switch	
POA6269	ZE-QA2-2S	Micro Switch	
POA6290	G2R1SAS1	Relay Switch	
POA6291	G2R2SAS1	Relay Switch	

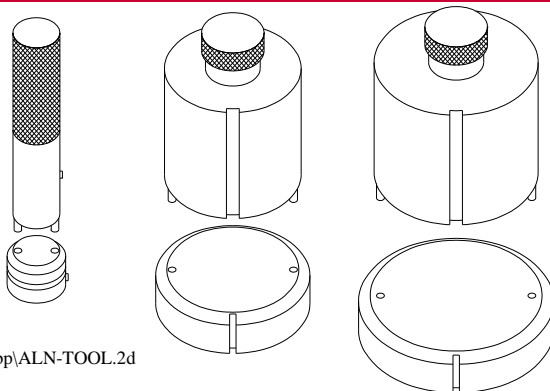


Thin Turret Guide Bushings

Dwg#	Part #	Amada Dwg #	Description	Price
17	*A3421	5500067	Thin Turret Guide Bushing 0, 90, 180, 270	
18	*A3422	807045	Thin Turret Guide Bushing 0	
19	*A3423	5500079	Thin Turret Guide Bushing 60, 90, 180, 300	
20	*A3424	5500069	Thin Turret Guide Bushing 0, 135, 225, 270	
21	*A3425	5500068	Thin Turret Guide Bushing 45, 90, 180, 315	



ALIGNMENT TOOLS



Dwg:\cnc-jobp\ALN-TOOL.2d

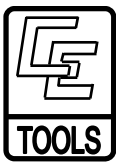
Lifter Springs, Rings, & Bolts

Dwg #	Part #	Amada Dwg #	Description	Price
10	*A3261	827241	Lifter Spring 1/2" , 1 1/4" , 2"	
11	*A3262	827240	Lifter Spring 3 1/2 , 4 1/2"	
12	*A3345	5501017 C/807123	Shoulder Bolt Thick 1/2, 1 1/4, 2, 3 1/2, 4 1/2"	
13	*A3346	807121	Shoulder Bolt Thin 1/2" , 1 1/4" , 2"	
14	*A3380	5501009	Lifter Ring	
15	*A3381	5500217	Lifter Ring	
16	*A3382	807122	Lifter Ring Thin	

1/2" Sta. A keyed	ATA-ALIGN-PD	
1/2" A non-keyed	ATA-ALIGN-PD2	
Not shown: Used with keyed unit, to align multi-(3) die holder. Place keyed unit in outer position and non-keyed in inner position.		
1-1/4 Sta. B	ATB-ALIGN-PD	
2-1/2 Sta. C	ATC-ALIGN-PD	
3-1/2 Sta. D	ATD-ALIGN-PD	
4- 1/2" Sta. E	ATE-ALIGN-PD	

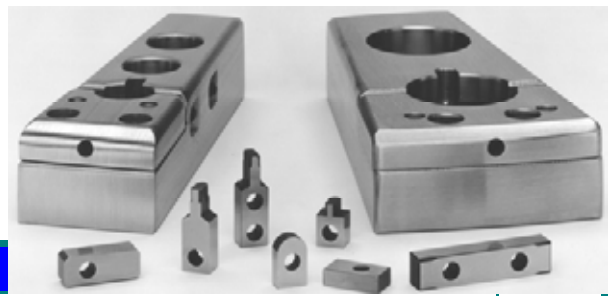
Machine Mounts

Part #	Amada Dwg #	Description	Price
EA8741	7030009	Coma / Pega 344	
EA8742	7030008/7030010	Aries / Octo / Pega 244	
EA8744	7030055	50 Ton Isolator	
EA8745	7030050	30 Ton Isolator	



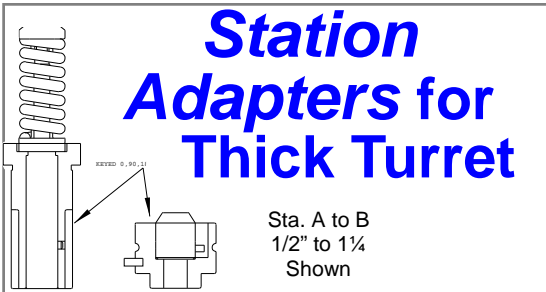
C.E. TOOLING

Die Holders & Spacers



Die Holder

Dwg	Part #	Amada	Description	Price
N/A	*A3512	827106	Die Holder & Spacer 1/2"	
N/A	*A3541a	827471	Die Holder, Lower & Block 1 1/4" Center	
N/A	*A3541b	827094	Die Holder, Lower & Block 1 1/4" Left	
N/A	*A3541c	827091	Die Holder, Lower & Block 1 1/4" Right	
N/A	*A3515	827108	Die Holder & Spacer 1 1/4" -Center	
N/A	*A3516	827156	Die Holder & Spacer 1 1/4" Left	
N/A	*A3517	827155	Die Holder & Spacer 1 1/4" Right	
N/A	*A3518	802245a	Die Holder Auto Index Sta.	
N/A	*A3521	827114	Die Holder & Spacer 2"	
N/A	*A3522	827407	Die Holder & Spacer 2"	
N/A	*A3524	827162	Die Holder & Spacer 3 1/2"	
N/A	*A3527	827123	Die Holder & Spacer 4 1/2"	
N/A	*A3560	827107	Die Spacer 1/2"	
N/A	*A3561	827158	Die Spacer 1 1/4" - Left	
N/A	*A3561a	827157	Die Spacer 1 1/4" - Right	
N/A	*A3561b	827111	Die Spacer 1 1/4" - Center	
N/A	*A3562	N/A	Die Spacer 2"	
N/A	*A3563	827163	Die Spacer 3 1/2"	
N/A	*A3564	827125	Die Spacer 4 1/2"	
N/A	*A3581a	827471a	Die Holder & Spacer 1 1/4 90° upper center	
N/A	*A3581b	827472a	Die Holder & Spacer 1 1/4 90° lower center	
N/A	*A3581c	827473a	Die Holder & Spacer 1 1/4 90° block center	
N/A	*A3581f	827094a	Die Holder & Spacer 1 1/4 90° upper left	
N/A	*A3581g	827495a	Die Holder & Spacer 1 1/4 90° lower center	
N/A	*A3581h	827095a	Die Holder & Spacer 1 1/4 90° block left	
N/A	*A3581i	827091a	Die Holder & Spacer 1 1/4 90° upper right	
N/A	*A3581j	827092a	Die Holder & Spacer 1 1/4 90° lower right	
N/A	*A3581k	827093	Die Holder & Spacer 1 1/4 90° block right	
N/A	*A3539	M6	Spring Washer	
N/A	*A3540	D8X20	Dowel Pin	
N/A	*A0966	D10X24	Dowel Pin	
N/A	*A3541	M6X14	Set Screw (Pkg OF 10)	
N/A	*A3542	M8	Spring Washer	
N/A	*A3543	M6X20	Cap Screw (Pkg OF 10)	
N/A	*A0834a	M6X25	Cap Screw (Pkg of 10)	
N/A	*A3544	C-3S	Free Stroke Bearing	
N/A	*A3545	827018	Spring Clip	
N/A	*A3546	M4X8	Pan Head Machine Screw (Pkg OF 10)	
N/A	*A3547	M4	Washer (Pkg of 10)	
N/A	*A3548	M8	Washer (Pkg of 10)	
N/A	*A3549	M10	Cap Screw (Pkg of 10)	
N/A	*A0830	M5X6	Set Screw (Pkg OF 10)	



To Use	Description	Cat. Code	Price
A in B	Punch	ATB-P-adapter	
A in B	Die	ATB-D-adapter	
B in C	Punch	ATC-BPA	
B in C	Die	ATC-BDA	
B in D	Punch	ATD-BPA	
B in D	Die	ATD-BDA	



Punch & Die Sharpening SHIMS

	STA	PUNCH SHIM .06" / 1,5mm THICK					DIE SHIM .03" / ,8mm THICK				
		CAT. NO	I.D	O.D.	QTY	PRICE	CAT NO	I.D.	O.D.	QTY	PRICE
Thin	1 1/4	*APSO1	.9	1.2	25		*ADSO1	1.3	1.85	25	
	2	*APS02	.53	1.97	12		*ADS02	2.1	2.6	5	
	3 1/2AS	*APS08	.78	3.48	5		*ADS03	3.6	4.9	5	
THICK TURRET 120MM	1/2M	*ATASR	2 or 4 Look to Sec.3 page 6				*ADS05	.6	.95	25	
	1/2i	*APS05	.635	.98	25						
	1 1/4M	*ATBSR#	2 or 4 Look to Sec.3 page 6				*ADSO1	1.3	1.85	25	
	1 1/4i	*APSO6	1.03	1.66	25						
	2AM	*APS07	.78	1.97	5		*ADS04	2.15	3.48	12	
	3 1/2AM	*APS08	.78	3.48	5		*ADS03	3.65	4.8	5	
	4 1/2AM	*APS09	.78	4.48	5		*ADS08	4.85	6.2		



C.E. TOOLING, INC.

**AMADA
COMPATIBLE
Guide Assembly
Go to Section 3
booklet**

Slug Ejectors Ejector holes are placed in punch tip sizes $>.270"/6.86mm$ This size can be reduced on request.					
EJECTOR For Hole Size	Square  Used for AT,AS,ST		Round  Used for 4W,2W,2B		Cat.Code Cost
		Cat.Code		Cat.Code	
.078/2,mm		N/A		*AEJ-R7	Bag of 50
.109/3mm	*AEJ-S1	bag of 24			
.234/6mm-.25"	*AEJ-S2	bag of 24		*AEJ-R2	Bag of 50
.39410mm	*AEJ-S3 bag of 12 • Used for AT,AS,ST,4W,2W,2B				
.59415mm	*AEJ-S4 bag of 12 • Used for AT,AS,ST,4W,2W,2B				

Have Ejectors Installed in New Punches, + to punch price, \$1.5 for widths $\leq .5"/12.7mm$ \$2.5 for widths $>.5"/12.7mm$



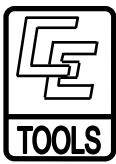
Punch & Die Grind Life New & Suggested Minimum Lengths

TOOLING		PUNCH		DIE	
Style	Sta.	New	O.E.M. Min.	New +.005	O.E.M.
Thin Turret	A,B, C & U 1/2,5/8,1 1/4,1.03	5.48"	5.2"	1.187	1.06
	AS- D 3 1/2	2.77"	2.65"	1.187	1.06
Fab Style (Strippit®)	Fab E 3 1/2 bottom of flange to tip	1"	7/8"	.85	.75"
Thick Turret Metric or Inch (S80) S80 or S90 Holders	A-B 1/2-1 1/4 m or i	8.15	7.9"	1.187	1.06
	C 2" m or i	3.78	3 5/8		
	D 3 1/2" m or i thread	3.307	3.18		
	E 4 1/2" m or i thread	3.346	3.220		
	C-E wt	1.575	1.32		

STRIKER PARTS			
Part #	Amada DWG	Description	Price
*A4840	6043138	Shear Plate-Aries 245	
*A4842	480333	Shear Plate-Coma	
*A4843	74160201	Shear Plate-Coma Plasma 8M	
*A4843A	74512699	Shear Plate-12M	
*A4844	821927 ? Dwg# changes May also be 6571084	Shear Plate-30Ton Old Style Prior to approximately 1994 84X8 w/hole 8.6id C.B. 14.2X3 Amada had dwg# changes for many machines to 6571084 39	
*A4844a	6571084	Shear Plate-30Ton New Style After approximately 1994 84dia., 4thick, no hole	
*A4844b	6575874	Shear Plate-30Ton 84 dia., 4 thick, w/hole in center	
*A4845	6048199	Shear Plate-30Ton New 79.9dia., 4thick, 9hole in center	
*A4846	811986	Shear Plate-20 Ton	
*A4850	822041	Striker punch-Old	
*A4851	6575875	Striker Punch-New	
*A4852	811756	Striker Punch—Thin	
*A4853	821598	Striker Punch-Coma Plasma	
*A4854	5033421	Striker Punch-Octo Thin	
*A4855	5033420	Striker Punch-Octo Thick	
*A4856	811984	Striker Punch-Pega 244	
*A4858	6043137	Back Up Plate - Aries 222,245	
*A4859	480332	Back Up Plate - Coma 557	
*A4860	74160030	Back Up Plate - Coma Plasma	
*A4861	821926 ? Dwg# changes	Back Up Plate—30Ton Old before 1994 Amada had dwg# changes for many machines to 6571083	
*A4861ab	6571083	Back Up Plate - Old after 1994	
*A4862	6575873	Back Up Plate-30 Ton New Evolution-C	
*A4863	811985	Back Up Plate-20 Ton	
*A4865	N/A	Striker Shoulder Bolt-Octo	
*A4875	480433	Striker Piston Coma 557	
*A4876	480431	Float Piston	

Tool Grinding Wheels

Part #	Amada Dwg	Description	Price
*A8890	9520215	Wheel for Togu III	
*A8891	74080047	Wheel for TG160	



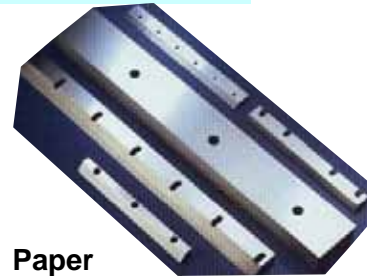
SHEAR BLADES *New or Sharpening*

We can supply cutting blades for most makes and models of cutting equipment for the Metalworking; Paper, Film, Foil Plastics, Textiles, Wood Veneer, etc... Many standard blades in stock.

Custom blades manufactured to your print or specifications.



Amada, Accur-Shear, American Hercules, Atlantic, Betenbender, Cincinnati, Cleveland Crane, Columbia, Century, Edwards, Haco, Herrvoss, HTC, Lodge & Shipley, Niagra, Pacific, Pearson, Pexto, Standard, Steelweld, Wolf, Wyson & Miles, and similar brands.



Paper Guillotine Trimmer

Flat bar, Angle Shear, Plate Notchers, Square/ Round Bar Knives, Guillotine/Trimmer



CIRCULAR METAL SLITTING BLADES & TUBE SLITTERS

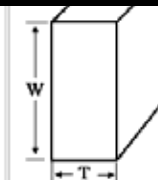
Ary, Gary, HFW, Iowa Precision, Shinko, Sler, Stamco, Reika-Werk, Wean, Welty-Way, Yoder

SHARPENING of up to 16' long, to original specifications and tolerances. They are polished to a mirror finish and then hand honed.

Recommended regrind tolerances are as follows: WIDTH - Parallel to within .005" from end to end THICKNESS - Parallel to within .003" from end to end No variation greater than .001" within any 12" length

Original Size	Minimum Width (W)	Minimum thickness (T)
3.000 x 1.000	2-5/8"	3/4"
4.000 x 1.000	3-5/8"	3/4"
5.000 x 1.125	4-5/8"	7/8"
5.500 x 1.500	5-1/8"	1-1/4"
6.500 x 1.750	6-1/8"	1-1/2"

Grinding Limits



LUBRICATION

Proximity Switches ¹⁰

Part #	Amada Dwg #	Description	Price
A5036	SK505	Lube Pump	\$519.0
A5041	U84MA2	Distribution Block - Pega / Vela / Coma	
A5047	U8RM	Distribution Block - Octo	
A5048	N/A	Distribution - Conversion Kit	
A5051	M6716-6	Flex Lines 32" Length 4mm	
A5052	M6716-6	Flex Lines 12" Length 4mm	
A5059	N/A	Copper Tubing 12' Length 6mm	
A5062	N/A	Grease Pump Reservoir Bowl - New Style	
A5067	N/A	Distribution Limit Switch	





C.E. TOOLING

Shear Blades Pricing for Amada press

Quality shear blades can make a difference in your production shearing operation. You'll get optimum performance and extended blade life resulting in more tons per edge. You will also get higher productivity as machine downtime for blade changes is significantly reduced. Our shear blades are manufactured from the finest alloys to close tolerance quality control standards. They are available in two material grades to suit individual shearing applications and are precisely treated to assure consistently uniform hardness.

Mark II - A modified high carbon, high chrome alloy tool steel grade providing maximum cuts before dulling when shearing mild steel up to and including 1" thick. Also applicable for stainless steel up to and including 1/2" thick.

Mark I - A quality shear blade material - Premium high carbon, high chrome tool steel. Gives maximum life before dulling on mechanical shears cutting mild steel up to and including 1/4" thick. Also for hydraulic shears up to and including 3/8" mild steel capacity. Stainless steel cutting limited to 3/16" capacity.

Part #	Grade	Model #	Price
*A7016	Mark 1	SH Blade M 1232 Lower	
*A7017	Mark 1	SH Blade M 1232 Upper	
*A7021	Mark 1	SH Blade M 1245 Lower	
*A7022	Mark 1	SH Blade M 1245 Upper	
*A7027	Mark 1	SH Blade M 1260 Lower	
*A7028	Mark 1	SH Blade M 1260 Upper	
*A7033	Mark 1	SH Blade M 2045 Lower	
*A7034	Mark 1	SH Blade M 2045 Upper	
*A7036	Mark 1	SH Blade M 2060 Lower	
*A7037	Mark 1	SH Blade M 2060 Upper	
*A7039	Mark 1	SH Blade M 2545 Lower	
*A7040	Mark 1	SH Blade M 2545 Upper	
*A7045	Mark 1	SH Blade M 2560 Lower	
*A7046	Mark 1	SH Blade M 2560 Upper	
*A7051	Mark 1	SH Blade M 3045 Lower	
*A7054	Mark 1	SH Blade M 3045 Upper	
*A7057	Mark 1	SH Blade M 3060 Lower	
*A7058	Mark 1	SH Blade M 3060 Upper	
*A7063	Mark 1	SH Blade M 4045 Lower	
*A7064	Mark 1	SH Blade M 4045 Upper	
*A7069	Mark 1	SH Blade M 4060 Lower	
*A7070	Mark 1	SH Blade M 4060 Upper	
*A7091	Mark 2	SH Blade H1213 Lower	
*A7092	Mark 2	SH Blade H1213 Upper	
*A7094	Mark 2	SH Blade H3013 Lower	
*A7095	Mark 2	SH Blade H3013 Upper	
*A7097	Mark 2	SH Blade H4013 Lower	
*A7098	Mark 2	SH Blade H4013 Upper	
*A7103	Mark 1	SH Blade H4065 Lower	
*A7106	Mark 1	SH Blade H4065 Upper	
*A7115	Mark 1	SH Blade H3065 Lower	
*A7118	Mark 1	SH Blade H3065 Upper	
*A7169	Mark 2	SH Blade H4013 Lower	
*A7172	Mark 2	SH Blade H4013 Upper	
*A7174	Mark 1	SH Blade BLS10 10 Lower Y	
*A7175	Mark 1	SH Blade BLS10 10 Upper Y	
*A7180	Mark 1	SH Blade BLS10 10 Lower X	
*A7181	Mark 1	SH Blade BLS10 10 Upper X	
*A7199	Mark 1	SH Blade CSW220 Bottom Right	
*A7200	Mark 1	SH Blade CSW220 Bottom Left	
*A7205	Mark 1	SH Blade CSW220 Top Right	
*A7206	Mark 1	SH Blade CSW220 Top Left	

Tool Grinding Wheels

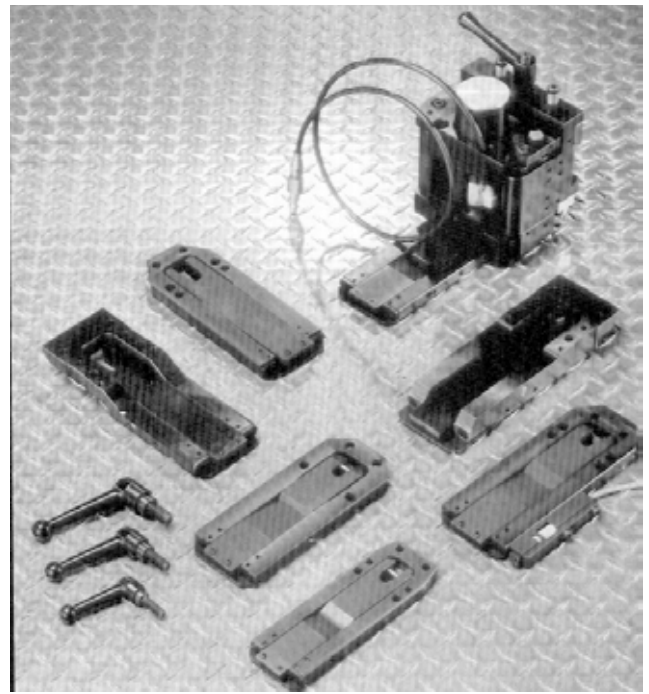
API #	Amada Dwg #	Description	Price
A8890	9520215	Tool Grinding Wheel: Togu III	
A8891	74080047	Tool Grinding Wheel: TG160	



WORK HOLDER CLAMPS

Manufactured to original OEM standards.

All sheet metal contact areas are heat treated



Work Holder Clamps INDEX	Page
ARIES #222, 224	20
ARIES Pneumatic, New Style #245 Base: Length=206, Width=80, Height=14	11,12
APELI Pneumatic, #367 Base: Length=206, Width=80, Height=14	10, 11
COMA Pneumatic, <i>THIN CLAMP</i> Base: Length=9-1/8, Width=3 1/8, Height=1/2	18, 19
COMA Pneumatic, <i>THICK CLAMP</i> Base: Length=9-1/8, Width=3 1/8, Height=5/8	20, 21
COMA Hydraulic, <i>Original Style THIN CLAMP</i> Base: length=9-1/8, width=3 1/8, height=1/2	22, 23
COMA Hydraulic, <i>THICK CLAMP</i> Base: Length=223, Width=80, Height=30	26, 27
COMA Hydraulic, <i>New Style from 1985/6</i> Base: Length=206, Width=80, Height=17	22, 23
LASERS New Style Base: Length=206, Width=80, Height=14	22, 23
OCTO	14, 15
PEGA Pneumatic-Origina, #244, #344 Old Style Clamps attach to dove tail with 4 bolts	12, 13
PEGA Pneumatic-New Style, #344, 345, 357, 358, 387 Attach to dovetail with 6 bolts	10, 11
PEGA Hydraulic, <i>New Style from 1985/6</i> Base: Length=206, Width=80, Height=17	22, 23
VELA Pneumatic, <i>THIN CLAMP</i> Base: Length=9-1/8, Width=3 1/8, Height=1/2=13mm	18, 19
VELA Pneumatic, <i>THICK CLAMP</i> Base: Length=9-1/8, Width=3 1/8, Height=5/8=16mm	20, 21
VELA Hydraulic, <i>This was an Option for Hydraulic</i> Base: Length=206, Width=80, Height=17	22, 23
VIPROS Hydraulic, #567, +Optional for other Vipros models	22, 23
VIPROS Pneumatic, #344, 345, 357, 358, 387 Base: length=206, width=80, height=14	10, 11
SHEAERS Pneumatic, New Style #245 Base: Length=206, Width=80, Height=14	22-25
STUBY LENGTH CLAMPS: Coma-Pegaz-Lila-Vela	17
PRESS BRAKE WORK STOPPER ASSEMBLIES	35



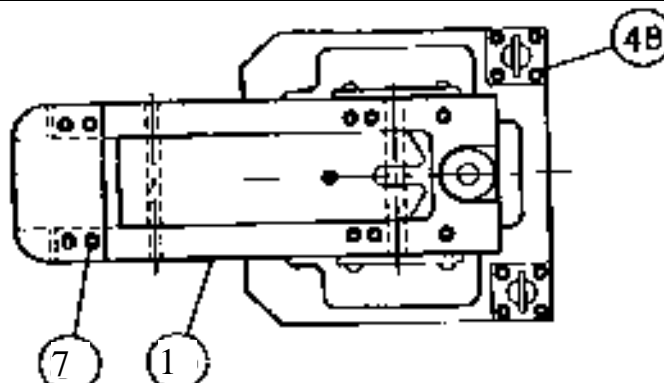
C.E. TOOLING, INC.

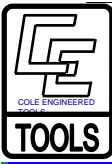
Pega Original Style Clamp-Pneumatic #244, 344 Original-Old Style, Dove Tail Attaches with 6 bolts

Dwg	Part #	Amada Drawing	Ref. CE old #	Description	Price
N/A		N/A	*AMH3MCO	Complete Ass'y Set Screw Grippers	
1-8	*A0202-CBAA	816032	*AMH3MJA-S	Clamp Base Assembly	
1	*A0302-B	816032	*AMH3MPA	Clamp Base	
2	*A0402-CL	816028	*AMH3MUJ-S	Clamper	
3	*A0501-CP	816025	*AMH3MLJ	Clamp Plate	
4	*A0601-SP	816026	*AH2MCP-32	Stopper Plate	
5	*A0795	M6X80	*AMH3MCP36	Straight Pin	
N/A	*A0811	KR10 x 20		Clamp Lever (Steel) 10mm	
N/A	*A0812	KR12 x 20		Clamp Lever (Steel) 12mm	
6	*A0830	M5 x 6		Screw - M5x6 - 10 pcs -(Clamper Tip)	
7	*A0831	M5 x 12		Screw - M5x12-10 pcs -(Clamp Plate)	
8	*A0832	M4 x 10		Screw - M4x10-10 pcs -(Stopper Plate)	
N/A	*A0840	N/A		Shims .010" - 10 pcs	
N/A	*A0841	N/A		Shims .003" - 10 pcs	
N/A	*A0842	N/A		Shims .005" - 10 pcs	
9	*A0850	N/A		Urethane Boot (for Clamper Tip)	
10	*A0853	8635270D		Sheet Sensor /for auto loader/ Shorter ver.	
N/A	*A0856	N/A		Sheet Sensor- 4 Pin Plug Thin New Style	
20 or 25	*A0860	813129		Dove Tail System (Guide Plate)	
N/A	*A0871	6WPH200-1		Head	
N/A	*A4155	KQL06-02S		Elbow	
N/A	*A4111	6 X 4		Vinyl Tubing 6 x 4mm / ft	
11	*A0843	N/A		Bushing	

Clamp Body Components *Below on this and opposing page*

Dwg No.	PART NUMBR	DESCRIPTION	PRICE	Dwg No.	PART NUMBR	DESCRIPTION	PRICE
00	*AMH3MCO	Complete Ass'y Carbide Griper		27	*AMH3MCP-08	Dove-Tail Clamp	
00	*AMH3MCO-S	Complete Assy set screw gripper		28	*AMH3MCP-28	Bolt	
03	*AMH1MCP-18	Clamp Lever Steel 10mm		29	*AMH3MCP-04	Dove-Tail Spring	
04	*AMH6MCP-38B	Hose Assembly		30	*AMH2MCP-30	Bolt	
04	*AMH6MCP-38A	Elbow		44	*AMHSFSO4X10	Flath Head Screw4x 10pcs	
05	*AMH6MCP-38B	Flexible tubing		48	*AMHSCS04X20	Socket Head Cap Screw 4X20	
06	*AMH6MCP-38C	Male Nipple		51	*AMH4MCP-16	Roller Cam/Head	
07	*AMH6MCP-38D	Coupler Assembly		56	*AMH3MCP-56	Set Screw	
07	*AMH6MCP-38E	Metric Coupler		99	*AMH4M-S10	.010 Shims Pkg of 10	
09	*AMH7MCP-23	Allen Head Bolt 6X90		99	*AMH4M-S3	.003 Shims Pkg of 10	
14	*AMH3MCP-54	Bolt./Spring Assembly		99	*AMH4M-S5	.005 Shims Okg of 10	
19	*AMHSSO5XO5	Set Screw (5x5) Package of 10		99	*AMH2MUB	Urethane Boot	



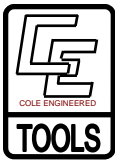


New Style Clamp -Pneumatic Pega, Vipros, Aries 245, Lasers, Apeli,

#344, #345, #357, #358, #387, #367, all Pneumatic Conversions.

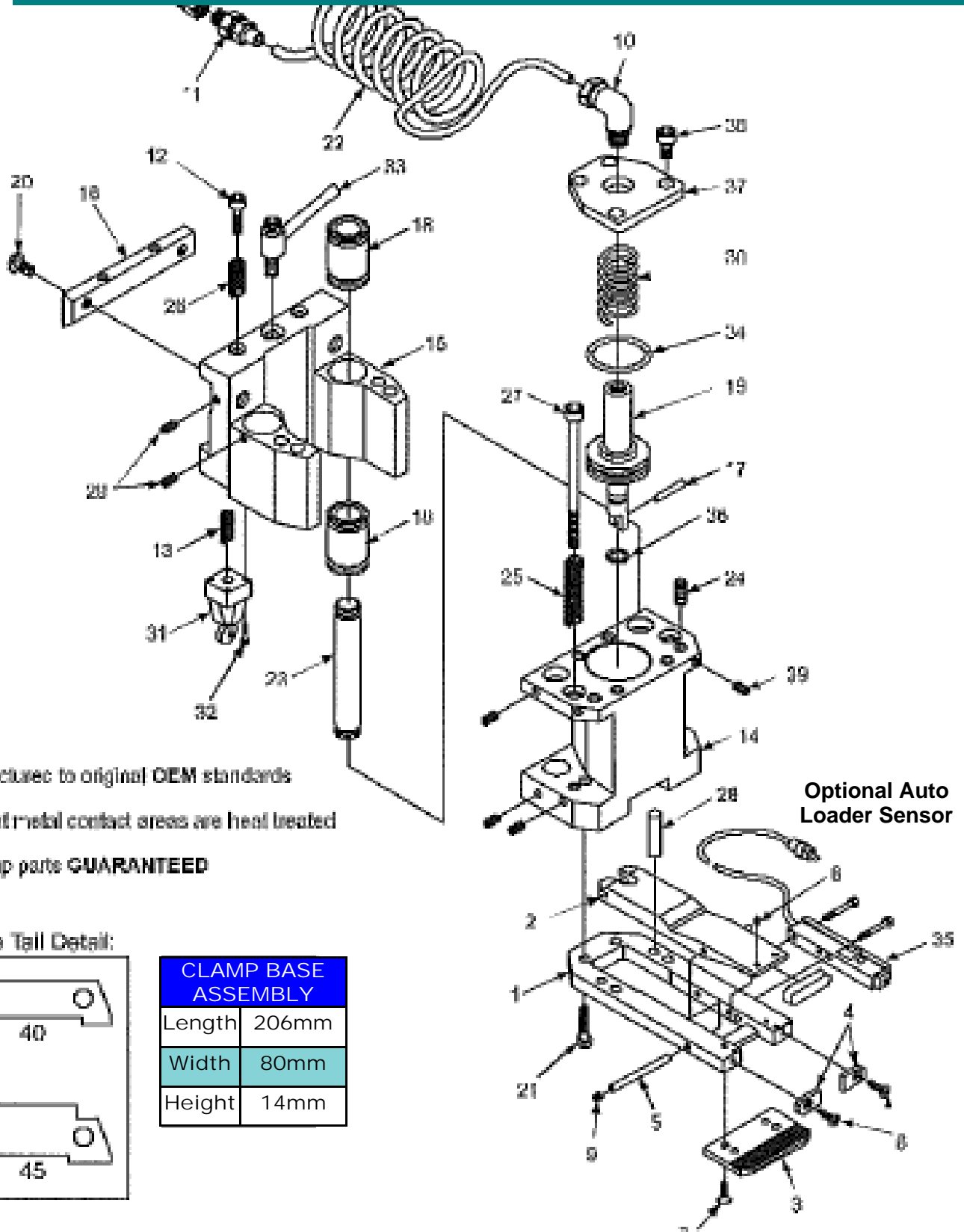
New Style Clamps attach to dove tail of machine with 4 bolts, old style used 6 bolts.

Dwg#	Part #	Amada Dwg #	Ref. CE old part#	Description	Price
1-34	*A0101-CA	826180	*AMH2MCO	Complete Clamp Assembly	
1-9	*A0201-CBA	826189		Clamp Base Assembly	
1	*A0301-B	826189	*AMH2MPA	Clamp Base <i>includes Straight pin & screw</i>	
2	*A0401-CL	826182	*AMH2MUJ-S	Clamper	
3	*A0501-CP	816025/826235		Clamp Plate	
4	*A0601-SP	816026		Stopper Plate	
5	*A0794	M6X60		Straight Pin	
N/A	*A0811	KR10 x 20		Clamp Lever (Steel) 10mm	
33	*A0812	KR12 x 20		Clamp Lever (Steel) 12mm	
6	*A0830	M5 x 6		Screw - M5x6 - 10 pcs- (Clamper Tip)	
7	*A0831	M5 x 12		Screw - M5x12- 10 pcs- (Clamp Plate)	
8	*A0832	M4 x 10		Screw - M4x10- 10 pcs-(Stopper Plate)	
N/A	*A0840	N/A		Shims .010"- 10 pcs	
N/A	*A0841	N/A		Shims .003"- 10 pcs	
N/A	*A0842	N/A		Shims .005"- 10 pcs	
36	*A0850	N/A		Urethane Boot (for Clamper Tip)	
35	*A0855	8635270D		Sheet Sensor (for Auto Loader)	
N/A	*A0856	74374415		Sheet Sensor- 4 Pin Plug	
N/A	*A0856a	7930044		Sheet Sensor -4 Pin Plug-Female Side	
40-45	*A0860	813129		Dove Tail System (Guide Plate)	
31	*A0871	6WPH200-1		Head	
10	*A4155	KQL06-02S		Elbow	
11	*A4123	KQH06-02S		Connector	
18	*A0869	N/A		Linear Bearing	
19	*A0870	N/A		Air Cylinder	
14	*A0872	N/A		Clamp Body - Piston Side	
20	*A0875	N/A		Bolt	
22	*A0876	N/A		Coil Tubing	
15	*A0880	N/A		Clamp Body - Dove Tail Side	
16	*A0881	N/A		Dove Tail Plate	
17	*A0882	N/A		Pin	
23	*A0883	N/A		Rod	
27	*A0884	N/A		Bolt	
34	*A0885	N/A		Washer - 10 pcs	
25	*A0886	N/A		Spring	
12	*A0887	N/A		Shoulder Bolt M8X25XM6-1	
26	*A0888	N/A		Spring	
29	*A0889	N/A		Set Screw - M6X6 -10 pcs	
32	*A0890	N/A		Bolt - 10 pcs	
9	*A0835	N/A		Set Screw - M8X8	
13	*A0891	N/A		Spring	
28	*A0966	N/A		Pin	
21	*A0895	N/A		Bolt	
24	*A0831B	N/A		Set Screw - M6X8 - 10 pcs	
N/A	*A0803	20SM		Coupler-Female	
N/A	*A0804	20pf (1/4")		Coupler-Male	
N/A	*A0844	6048241		Override Plunger Assembly Vipros 255	



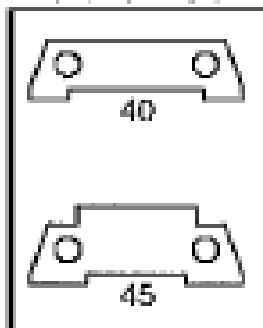
New Style Clamp - Pneumatic

Pega, Vipros, Aries 245, Lasers, Apeli,
 #344, #345, #357, #358, #387, #367, all Pneumatic Conversions.



- Manufactured to original OEM standards
- All sheet metal contact areas are heat treated
- All clamp parts **GUARANTEED**

Dove Tail Detail:



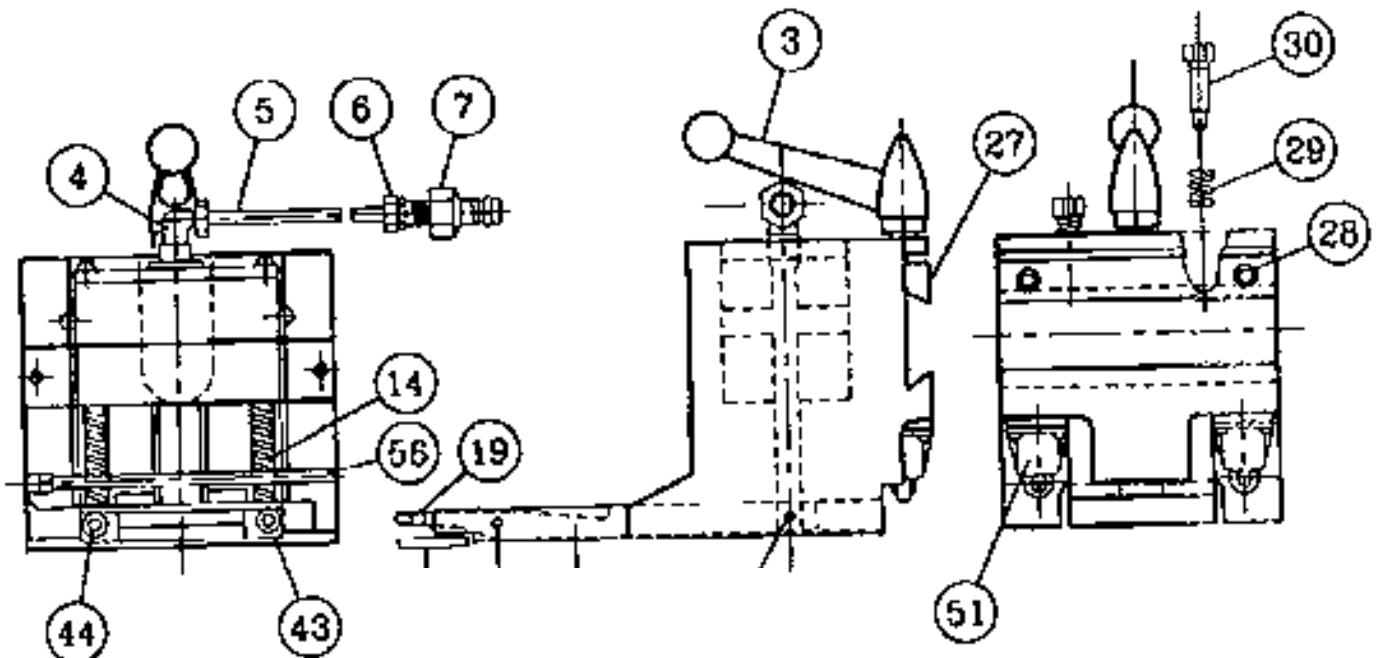
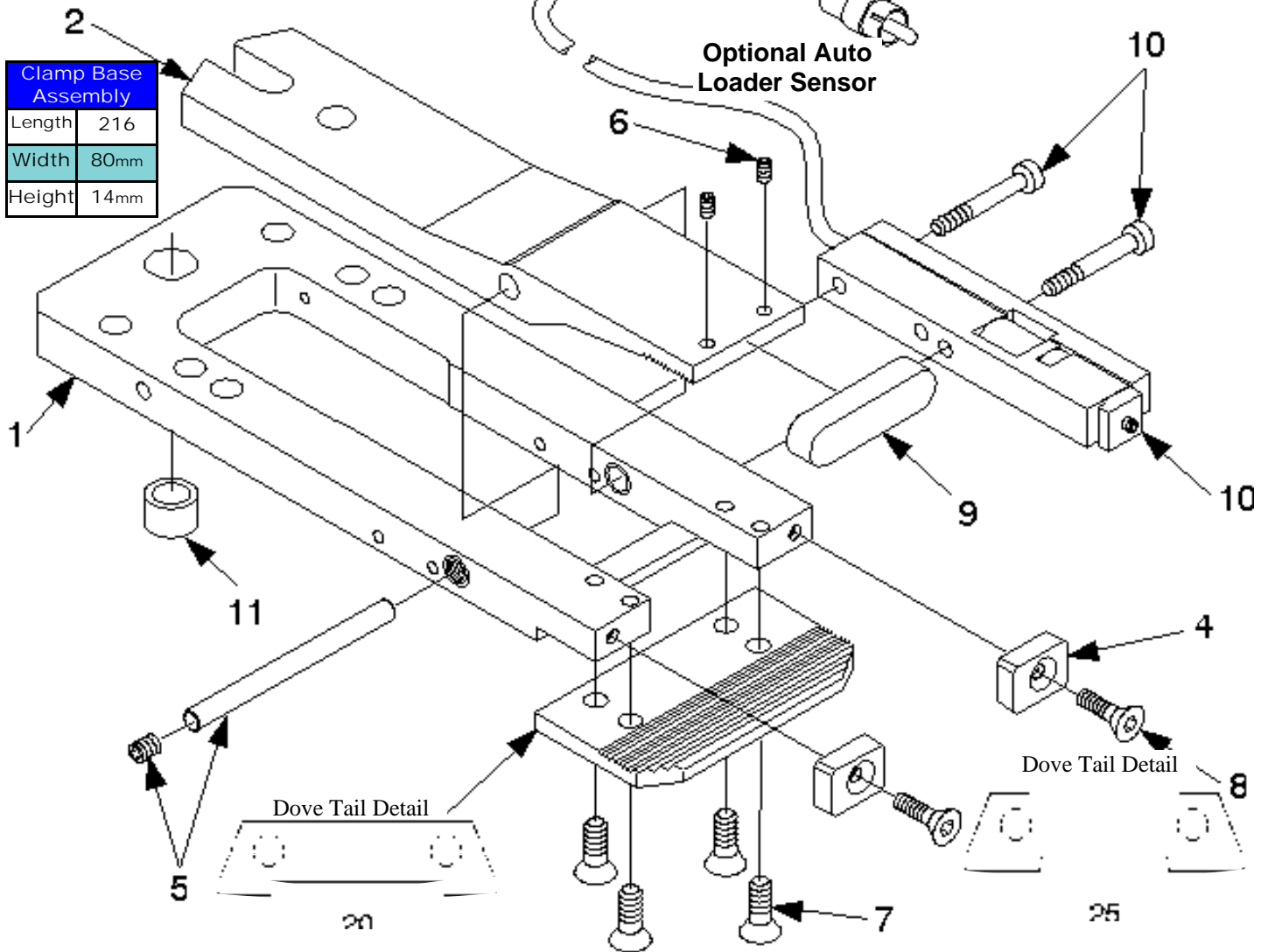
CLAMP BASE ASSEMBLY	
Length	206mm
Width	80mm
Height	14mm

Optional Auto Loader Sensor



Amada PEGA Original Style Air #244 #344

Usually for machines (or work holder units) mfg. before 1987. A distinguishing trait is that 6 bolts are used to attach old style holders to dove tail of machine. (New styles have only 4 bolts.)

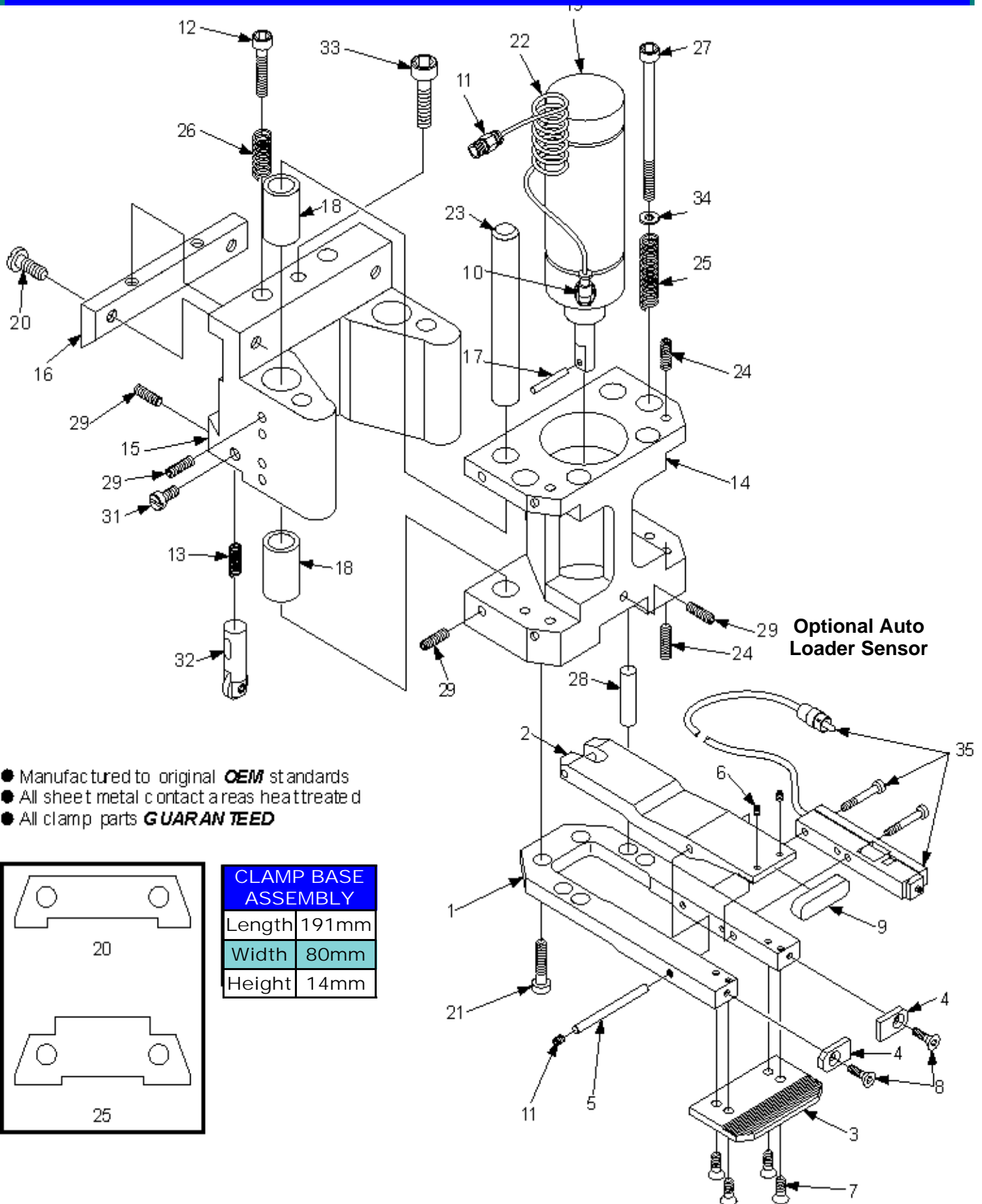




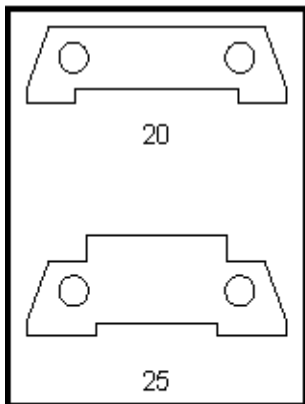
Octo Clamp

Dwg	Part #	Amada Dwg	Ref. CE old #	Description	Price
1-34	A0103-CA	6010220	*AMH7MCOS	Complete Clamp Assembly	
1-9	A0203-CBA	5033643	*AMH7MJA-3/8	Clamp Base Assembly	
1	A0303-B	5033643	*AMH7MPA *AMH7MPA-3/8	Clamp Base	
2	A0403-CL	5033644	*AMH7MUJ	Clamper	
3	A0501-CP	816025	*AMH3MLJ	Clamp Plate	
4	A0601-SP	816026	*AMH2MCP-32	Stopper Plate	
5	A0794	M6X60	*AMH7MCP-31	Straight Pin	
N/A	A0803	20SM		Coupler-Female	
N/A	A0804	20PF 1/4"		Coupler-Male	
6	A0830	M5 x 6		Screw - M5x6 - 10 pcs- (Clamper Tip)	
7	A0831	M5 x 12		Screw - M5x12- 10 pcs- (Clamp Plate)	
24	A0831B	N/A		Set Screw M6X8 - 10pcs	
8	A0832	M4 x 10		Screw - M4x10- 10 pcs- (Stopper Plate)	
9	A0835	N/A		Set Screw - M8X8	
33	A0839d	N/A		Socket Cap Screw	
N/A	A0840	N/A		Shims .010"- 10 pcs	
N/A	A0841	N/A		Shims .003"- 10 pcs	
N/A	A0842	N/A		Shims .005"- 10 pcs	
30	A0850	N/A		Urethane Boot (for Clamper Tip)	
35	A0855A	8635270D		Sheet Sensor (for Auto Loader)	
N/A	A0856	74374415		Sheet Sensor - 4 Pin Plug	
32	A0859	74161389		Plunger Assembly	
31	A0859C	N/A		Set Bolt	
20/25	A0860	813129		Dove Tail System (Guide Plate)	
18	A0869	N/A		Linear Bearing	
19	A0870	N/A		Air Cylinder	
14	A0872C	N/A		Clamp Body - Piston Side	
20	A0875	N/A		Bolt	
22	A0876	N/A		Coil Tubing	
15	A0880a	N/A		Clamp Body - Dove Tail Side	
16	A0881	N/A		Dove Tail Plate	
17	A0882	N/A		Pin	
23	A0883	N/A		Rod	
27	A0884	N/A		Bolt	
34	A0885	N/A		Washer - 10pcs	
25	A0886	N/A		Spring	
12	A0887	N/A		Shoulder Bolt M8X25XM6-1	
26	A0888	N/A		Spring	
29	A0889	N/A		Set Screw - M6X6 - 10 pcs	
13	A0891	N/A		Spring	
21	A0895	N/A		Bolt	
28	A0966	N/A		Pin	
11	A4123	KQH06-02S		Connector	
10	A4155	KQL06-02S		Elbow	

Octo Clamp



- Manufactured to original **OEM** standards
- All sheet metal contact areas heat treated
- All clamp parts **GUARAN TEED**

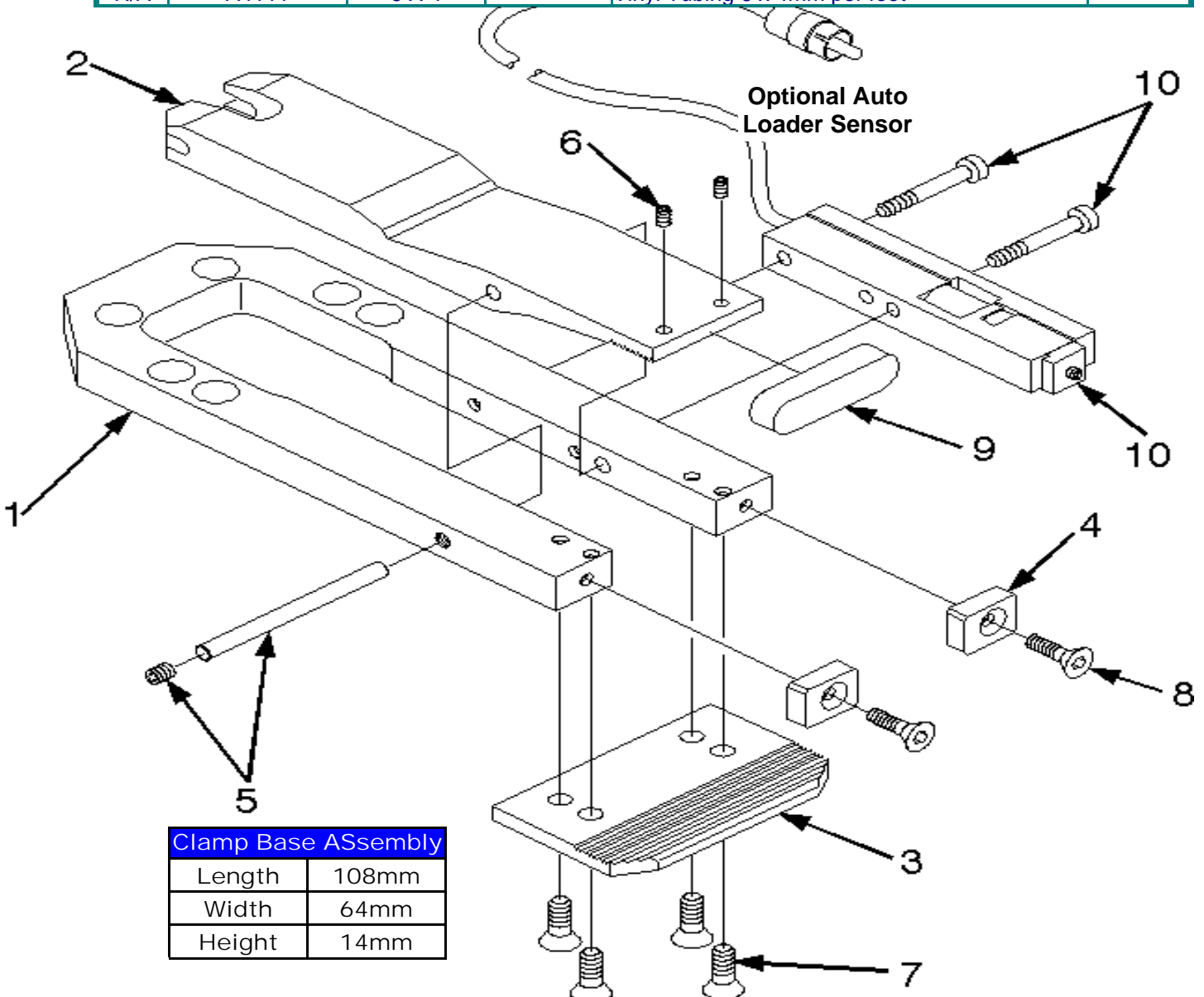


CLAMP BASE ASSEMBLY	
Length	191mm
Width	80mm
Height	14mm



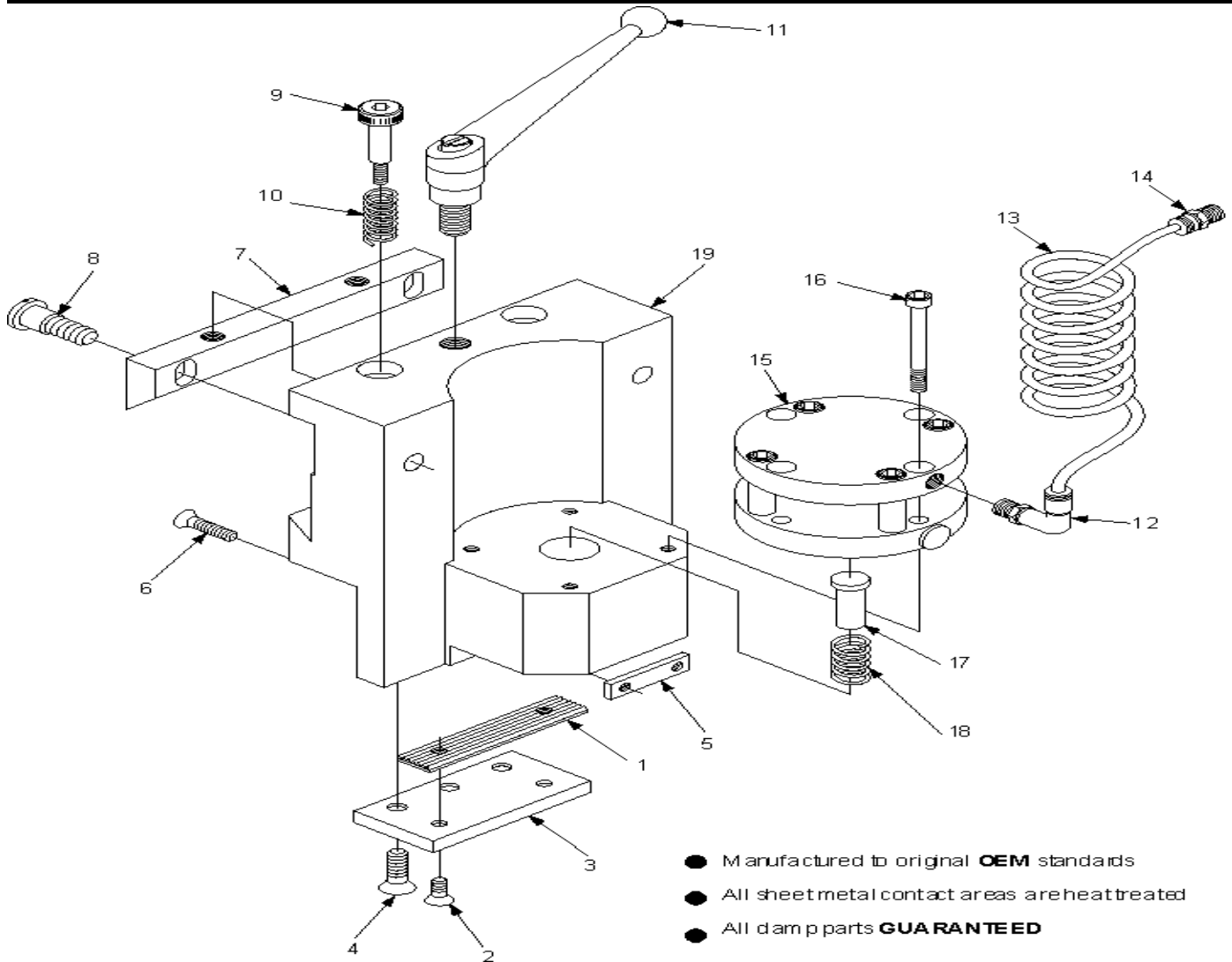
Aries 222, 224 Clamp

Drw #	API Part #	Amada Dwg	Ref. CE old #	Description	Price
	Not Available		Complete Ass'y	Not available, nor Body Parts	N/A
1-8	A0204-CBAA	6043408		Clamp Base Assembly	
1	A0304-B	6043408		Clamp Base Width =2 1/2"	
2	A0404-CL	6043409		Clamper	
3	A0502-CP	6043410		Clamp Plate	
4	A0602-SP	6043411		Stopper Plate	
5	A0794	M6X60		Straight Pin	
N/A	A0811	KR10 X 20		Clamp Lever (Steel) 10mm	
N/A	A0812	KR12 X 20		Clamp Lever (Steel) 12mm	
6	A0830	M5 X 6		M5x 6 Set Screw-10 pcs (Clamper Tip)	
7	A0831	M5 X 12		M5x12 Screw - 10 pcs (Clamp Plate)	
8	A0832	M4 X 10		M4x 10Screw - 10 pcs (Stopper Plate)	
N/A	*A0870	N/A		Air Cylinder Pnuematic	
N/A	A0873	N/A		Hydraulic Cylinder	
N/A	A0840	N/A		Shims .010"- 10 pcs	
N/A	A0841	N/A		Shims .003"- 10 pcs	
N/A	A0842	N/A		Shims .005"- 10 pcs	
10	A0855	8635270D		Sheet Sensor (for Auto Loader)	
N/A	A0856	N/A		Sheet Sensor- 4 Pin Plug	
N/A	A4155	KQL06-02S		Elbow	
N/A	A4111	6 X 4		Vinyl Tubing 6 x 4mm per foot	



Coma, Vela, Lyla, Pega Stubby Clamp

Dwg#	Part #	Amada Dwg	Ref. CE old #	Description	Price
1-19	*A0110-CA	N/A		Complete Clamp Assembly Pneumatic	
N/A	*A-call	N/A	*A-call	Complete Clamp Assembly Hydraulic	
N/A	A0803	20SM		Coupler-Female	
N/A	A0804	20PF 1/4"		Coupler-Male	
11	*A0812	N/A		Clamp Lever (Steel) 12mm	
4	A0827	N/A		Screw M6 X 16	
2	*A0832	N/A		Screw M4 X 10, package of 10	
8	*A0875	N/A		Bolt	
13	*A0876	N/A		Clamp Coil Tubing	
7	*A0881	N/A		Dove Tail Plate	
9	*A0887	N/A		Shoulder Bolt	
10	*A0888	N/A		Spring	
18	*A0891	N/A		Spring	
16	*A0936	N/A		Screw M5 X 55	
6	*A0937	N/A		Screw M5 X 20, package of 10	
15	*A0938	N/A		Air Cylinder	
17	*A0940	N/A		Plunger Clamp	
5	*A0941	N/A		Stopper	
3	*A0942	N/A		Back Up Plate	
1	*A0943	N/A		Clamp Plate	
4	*A0968	N/A		Lower Unit	
14	*A4123	N/A		Connector	
12	*A4153	N/A		Elbow Connector	



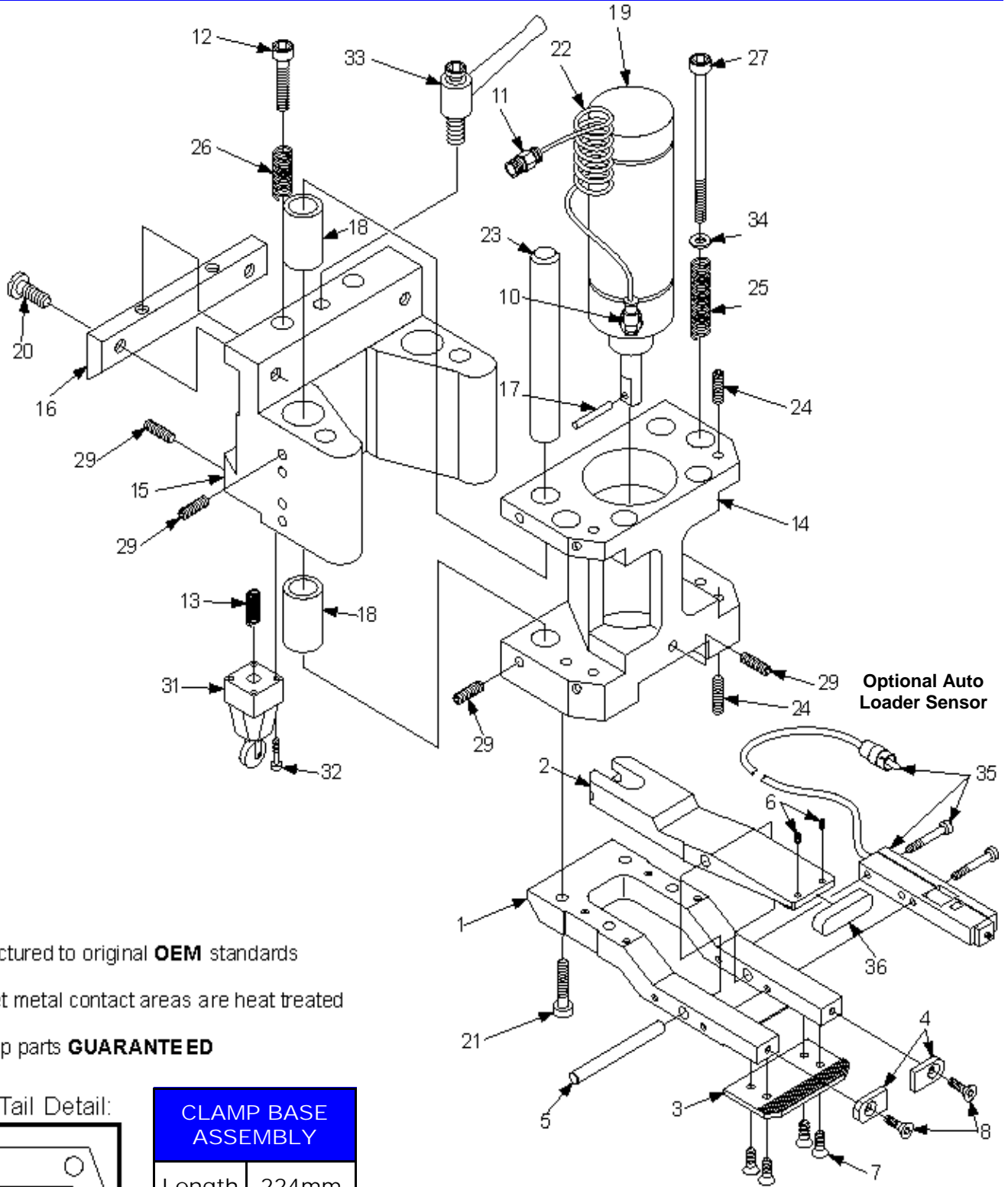


Coma, Lyla, Vela

Thin Clamp (1/2 height) - Pneumatic

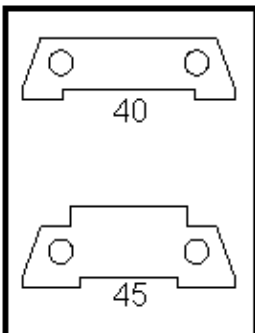
Dwg	Part #	Amada Drawing	Ref. CE old #	Description	Price
1-34	A0105-CAA	806060		Complete Clamp Assembly	
1-8	A0205-CBAA	806067		Clamp Base Assembly	
1	A0305-B	806067		Clamp Base	
2	A0405-CL	826194		Clamper	
3	A0504-CP	826076		Clamp Plate	
4	A0601-SP	816026		Stopper Plate	
5	A0795	M6X80		Straight Pin	
33	A0812	806075		Clamp Lever (Steel) 12mm	
6	A0830	M5 x 6		Screw -M5x6 - 10pcs (Clamper Tip)	
7	A0831	M5 x 12		Screw -M5x12 - 10pcs (Clamp Plate)	
8	A0832	M4 x 10		Screw -M4x10 - 10pcs (Stopper Plate)	
N/A	A0840	N/A		Shims .010"- 10 pcs	
N/A	A0841	N/A		Shims .003"- 10 pcs	
N/A	A0842	N/A		Shims .005"- 10 pcs	
36	A0850	N/A		Urethane Boot (for Clamper Tip)	
35	A0855	8635270D		Sheet Sensor (for Auto Loader)	
N/A	A0856	N/A		Sheet Sensor- 4 Pin Plug	
40 or 45	A0860	803090		Dove Tail System (Guide Plate)	
31	A0871	FOR-WLD2		Head	
10	A4155	KQL06-02S		Elbow	
11	A4141	KQH06-02S		Connector	
18	A0869	N/A		Linear Bearing	
19	A0870	N/A		Air Cylinder	
14	A0872B	N/A		Clamp Body - Piston Side	
20	A0875	N/A		Bolt	
22	A0876	N/A		Coil Tubing	
15	A0880	N/A		Clamp Body - Dove Tail Side	
16	A0881	N/A		Dove Tail Plate	
17	A0882	N/A		Pin	
23	A0883	N/A		Rod	
27	A0884	N/A		Bolt	
34	A0885	N/A		Washer - 10 pcs	
25	A0886	N/A		Spring	
12	A0887	N/A		Shoulder Bolt M8X25XM6-1	
26	A0888	N/A		Spring	
29	A0889	N/A		Set Screw - M6X6 - 10 pcs	
32	A0890	N/A		Bolt - 10 pcs	
30	A0835	N/A		Set Screw - M8X8	
13	A0891	N/A		Spring	
21	A0895	N/A		Bolt	
24	A0831B	N/A		Set Screw M6X8 - 10 pcs	

Coma, Lyla, Vela Thin Clamp (1/2 height) - Pneumatic



- Manufactured to original **OEM** standards
- All sheet metal contact areas are heat treated
- All clamp parts **GUARANTEED**

Dove Tail Detail:



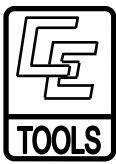
CLAMP BASE ASSEMBLY	
Length	224mm
Width	80mm
Height	14mm



C.E. TOOLING, INC.

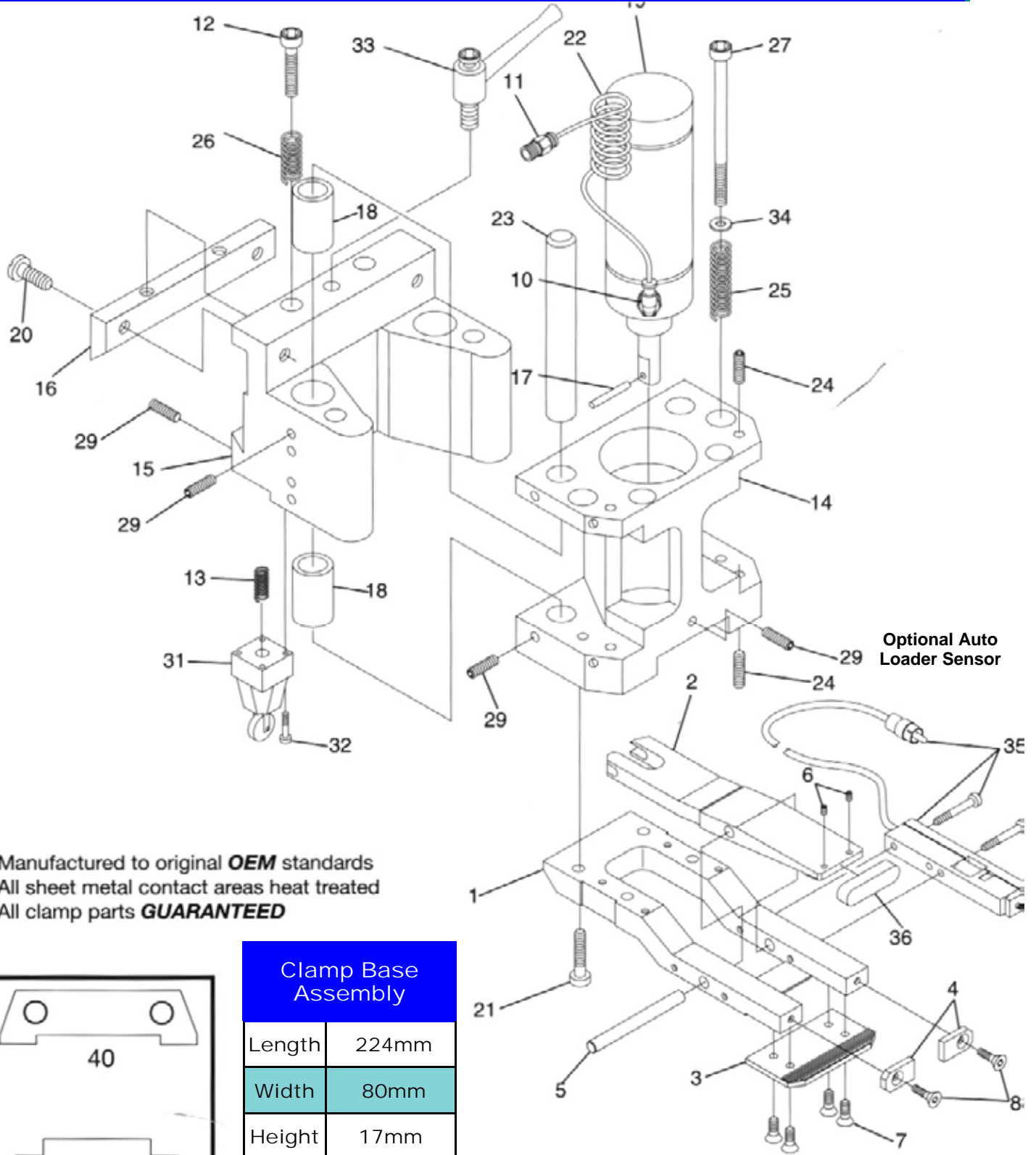
Vela Coma Thick Clamp - Pneumatic

Dwg #	Part #	Amada Drawing	Ref. CE old #	Description	Price
1-34	A0106-CAA	826030B		Complete Clamp Assembly	
1-8	A0206-CBAA	826031		Clamp Base Assembly	
1	A0306-B	826031		Clamp Base	
2	A0406-CL	826032		Clamper	
3	A0504-CP	826076		Clamp Plate	
4	A0603-SP	826092		Stopper Plate	
5	A0795	M6 X 80		Straight Pin	
33	A0812	806075		Clamp Lever (Steel) 12mm	
6	A0830	M5 X 6		Set Screw-10 pcs- M5x6 -(Clamper Tip)	
7	A0831	M5 X 12		Screw - 10 pcs- M5x12 -(Clamp Plate)	
8	A0832	M4 X 10		Screw - 10 pcs- M4x10 -(Stopper Plate)	
N/A	A0840	N/A		Shims .010"- 10 pcs	
N/A	A0841	N/A		Shims .003"- 10 pcs	
N/A	A0842	N/A		Shims .005"- 10 pcs	
36	A0850	N/A		Urethane Boot (for Clamper Tip)	
35	A0855	8635270-D		Sheet Sensor (for Auto Loader)	
N/A	A0856	N/A		Sheet Sensor- 4 Pin Plug	
40 or 45	A0860	823016 / 803090		Dove Tail System (Guide Plate)	
31	A0871	FOR-WLD2		Head	
10	A4155	KQL06-02S		Elbow	
11	A4141	KQH06-02S		Connector	
18	A0869	N/A		Linear Bearing	
19	A0870	N/A		Air Cylinder	
14	A0872B	N/A		Clamp Body - Piston Side	
20	A0875	N/A		Bolt	
22	A0876	N/A		Coil Tubing	
15	A0880	N/A		Clamp Body - Dove Tail Side	
16	A0881	N/A		Dove Tail Plate	
17	A0882	N/A		Pin	
23	A0883	N/A		Rod	
27	A0884	N/A		Bolt	
34	A0885	N/A		Washer - 10 pcs	
25	A0886	N/A		Spring	
12	A0887	N/A		Shoulder Bolt M8X25XM6-1	
26	A0888	N/A		Spring	
29	A0889	N/A		Set Screw - M6X6 - 10 pcs	
32	A0890	N/A		Bolt - 10 pcs	
30	A0835	N/A		Set Screw - M8X8	
13	A0891	N/A		Spring	
21	A0895	N/A		Bolt	
24	A0831B	N/A		Set Screw - M6X8 - 10 pcs	



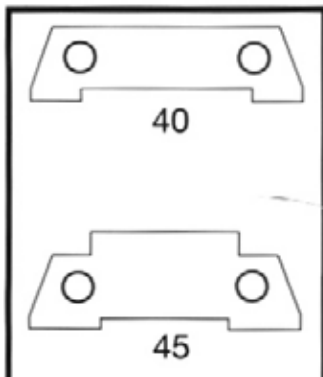
C.E. TOOLING, INC.

Vela Coma Thick Clamp (5/8 height) - Pneumatic



Optional Auto Loader Sensor

- Manufactured to original **OEM** standards
- All sheet metal contact areas heat treated
- All clamp parts **GUARANTEED**



Clamp Base Assembly	
Length	224mm
Width	80mm
Height	17mm



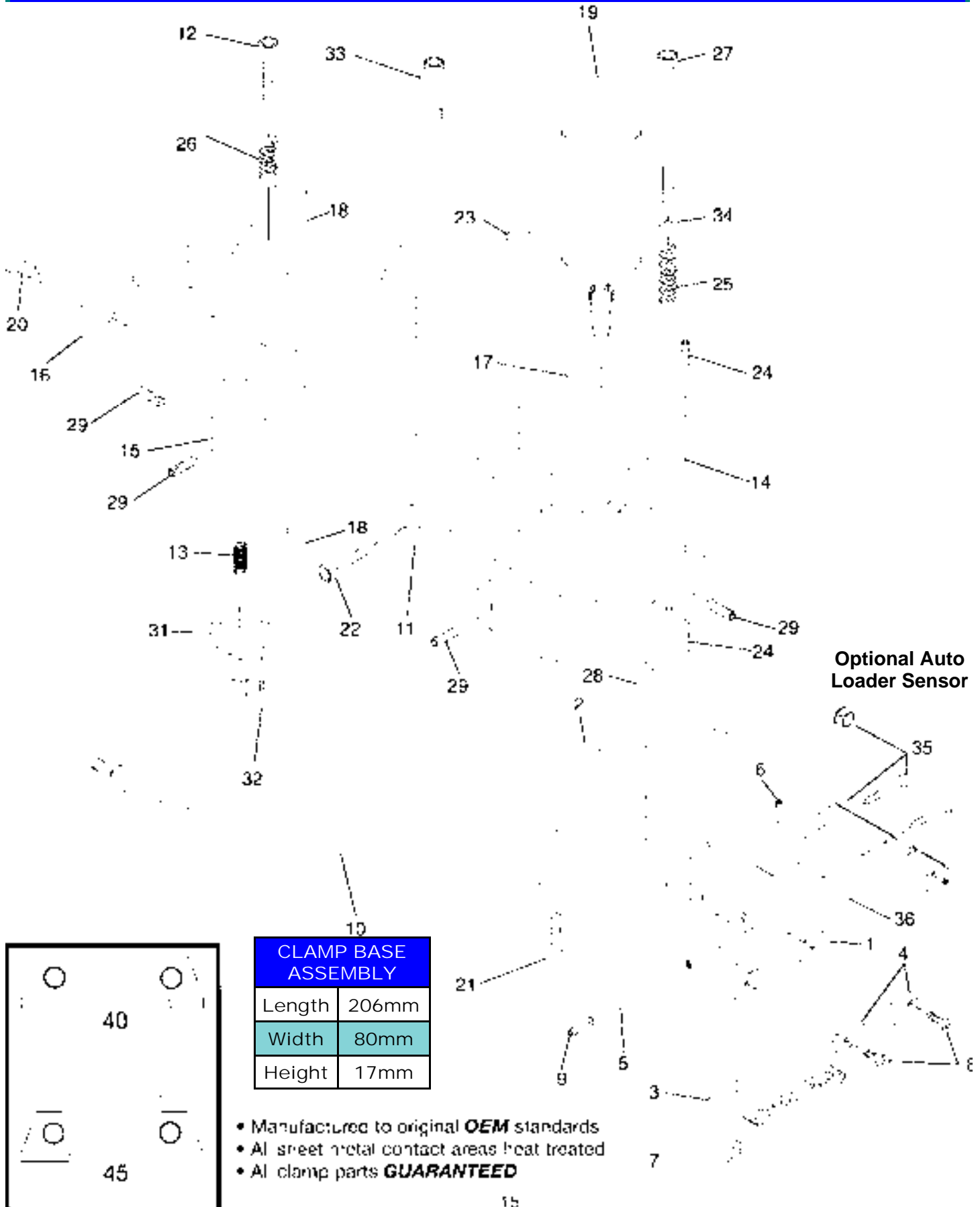
C.E. TOOLING,

Also used for most
Amada SHEARS

Coma, Vipros#358, 567 New Style Clamp - Hydraulic
Was also optional for Hydraulic on Pega & Vella

Dwg	Part #	Amada Drawing	Ref. CE old #	Description	Price
1-34	*A0107-CAA	826190		Complete Clamp Assembly	
1-9	*A0207.CBAA	826193		Clamp Base Assembly	
1	*A0307-B	826193		Clamp Base	
2	*A0407-CL	826194		Clamper	
3	*A0501-CP	816025		Clamp Plate	
4	*A0601-SP	816026		Stopper Plate	
5	*A0796	M8 X 60		Straight Pin	
N/A	*A0811	KR10 X 20		Clamp Lever (Steel) 10mm	
33	*A0812	KR12 X 20		Clamp Lever (Steel) 12mm	
6	*A0830	M5 X 6		Set Screw- 10 pcs- M5X6 (Clamper Tip)	
7	*A0831	M5 X 12		Screw - 10 pcs- M5X12- (Clamp Plate)	
8	*A0832	M4 X 10		Screw - 10 pcs- M4X10- (Stopper Plate)	
N/A	*A0840	N/A		Shims .010"- 10pcs	
N/A	*A0841	N/A		Shims .003"- 10pcs	
N/A	*A0842	N/A		Shims .005"- 10pcs	
36	*A0850	N/A		Urethane Boot (for Clamper Tip)	
35	*A0855	8635270D		Sheet Sensor (for Auto Loader)	
N/A	*A0856	N/A		Sheet Sensor- 4 Pin Plug	
40 or 45	*A0860	823016 / 803090		Dove Tail System (Guide Plate)	
31	*A0871	6WPH200-1		Head	
10	*A8227	827577		Hydraulic Hose	
11	*A0896	N/A		Hose Clamp Holder	
22	*A0834A	N/A		Screw	
18	*A0869	N/A		Linear Bearing	
19	*A0873	N/A		Hydraulic Cylinder	
14	*A0872A	N/A		Clamp Body - Piston Side	
20	*A0875	N/A		Bolt	
15	*A0880	N/A		Clamp Body - Dove Tail Side	
16	*A0881	N/A		Dove Tail Plate	
17	*A0873i	N/A		Pin	
23	*A0883	N/A		Rod	
27	*A0884	N/A		Bolt	
34	*A0885	N/A		Washer - 10 pieces	
25	*A0886	N/A		Spring	
12	*A0887	N/A		Shoulder Bolt M8X25XM6-1	
26	*A0888	N/A		Spring	
29	*A0889	N/A		Set Screw - M6X6 - 10pcs	
32	*A0890	N/A		Bolt - 10 pcs	
9	*A0836	N/A		Set Screw - M10X12 - 10 pcs	
13	*A0891	N/A		Spring	
21	*A0895	N/A		Bolt	
24	*A0831B	N/A		Set Screw M6X8 - 10 pcs	

Coma, Vipros#567 New Style Clamp - Hydraulic



Optional Auto Loader Sensor

CLAMP BASE ASSEMBLY	
Length	206mm
Width	80mm
Height	17mm

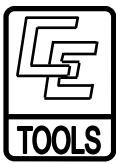
- Manufactured to original **OEM** standards
- All sheet metal contact areas heat treated
- All clamp parts **GUARANTEED**



C.E. TOOLING, INC.

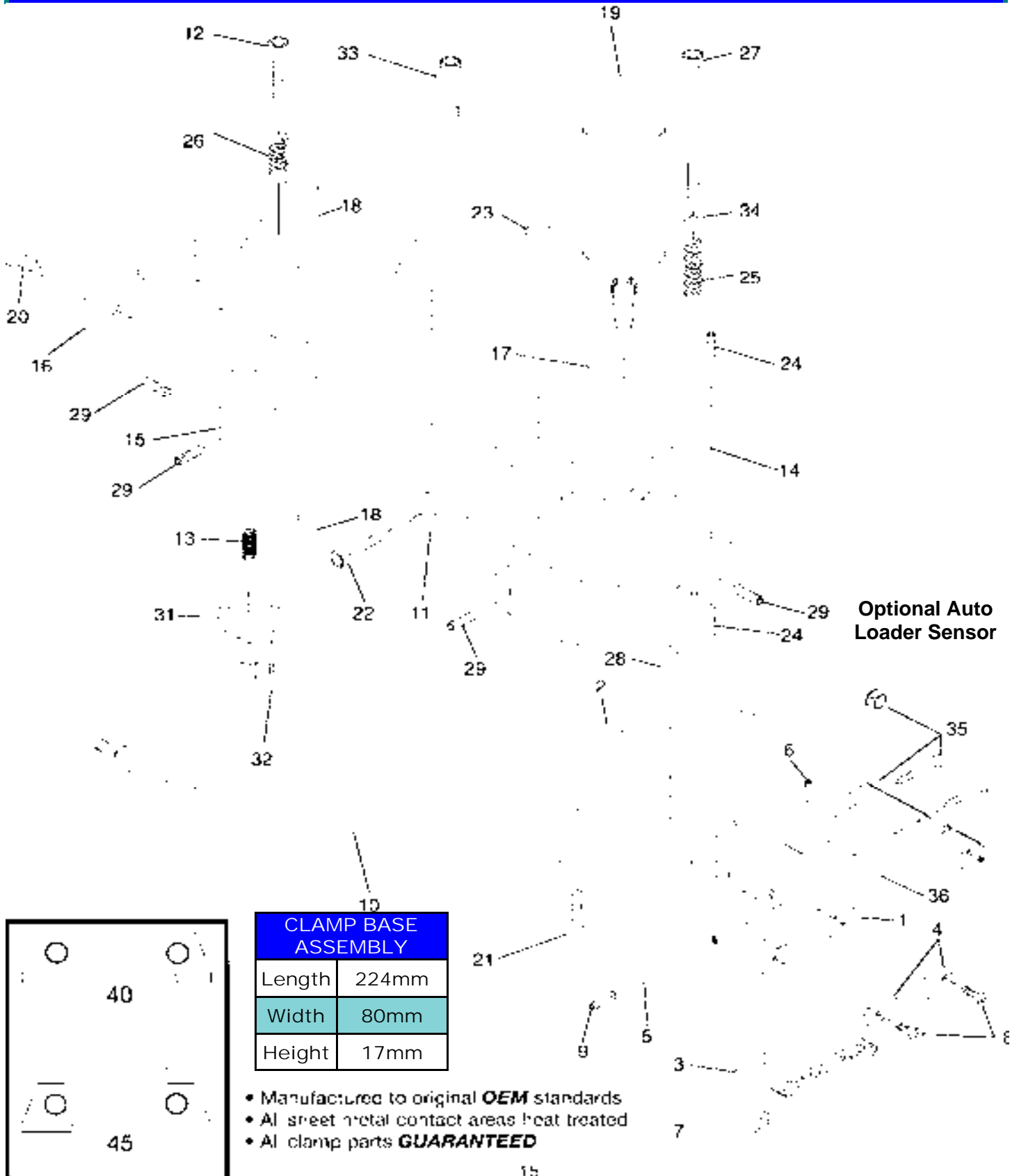
Coma Original Style Clamp Hydraulic

Dwg	API Part #	Amada Drawing #	Ref. CE old #	Description	Price
1-34	A0108-CAA	826070D		Complete Clamp Assembly	
1-8	A0208-CBAA	826074		Clamp Base Assembly	
1	A0308-B	826074B		Clamp Base	
2	A0408-CL	826075A		Clamper	
3	A0504-CP	826076		Clamp Plate	
4	A0603-SP	826092		Stopper Plate	
5	A0797	8 X 80		Straight Pin with set screw	
6	A0830	M5 x 6		Set Screw- 10 pcs-M5X6-(Clamper Tip)	
7	A0831	M5 x 12		Screw - 10 pcs-M5X12-(Clamp Plate)	
8	A0832	M4 X 10		Screw - 10 pcs-M4X10-(Stopper Plate)	
N/A	A0840	N/A		Shims .010"- 10 pcs	
N/A	A0841	N/A		Shims .003"- 10 pcs	
N/A	A0842	N/A		Shims .005"- 10 pcs	
36	A0850	N/A		Urethane Boot (for Clamper Tip)	
35	A0855	8635270D		Sheet Sensor (for Auto Loader)	
N/A	A0856	N/A		Sheet Sensor- 4 Pin Plug	
40 or 45	A0860	823016 / 803090		Dove Tail System (Guide Plate)	
31	A0871	6WPH200-1		Head	
10	A8227	827577		Hydraulic Hose	
11	A0896	N/A		Hose Clamp Holder	
22	A0834A	N/A		Screw	
18	A0869	N/A		Linear Bearing	
19	A0873	N/A		Hydraulic Cylinder	
14	A0872B	N/A		Clamp Body - Piston Side	
20	A0875	N/A		Bolt	
15	A0880	N/A		Clamp Body - Dove Tail Side	
16	A0881	N/A		Dove Tail Plate	
17	A0873i	N/A		Pin	
23	A0883	N/A		Rod	
27	A0884	N/A		Bolt	
34	A0885	N/A		Washer - 10 pcs	
25	A0886	N/A		Spring	
12	A0887	N/A		Shoulder Bolt M8X25XM6-1	
26	A0888	N/A		Spring	
29	A0889	N/A		Set Screw - M6X6 - 10 Pieces	
32	A0890	N/A		Bolt - 10 pieces	
13	A0891	N/A		Spring	
21	A0895	N/A		Bolt	
24	A0831B	N/A		Set Screw M6X8 - 10 Pieces	
33	A0812	KR12X20		Clamp Lever - Steel 12mm	

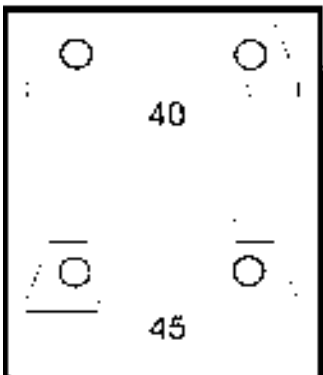


C.E. TOOLING, INC.

Coma Original Style Clamp Hydraulic



Optional Auto Loader Sensor



CLAMP BASE ASSEMBLY

Length	224mm
Width	80mm
Height	17mm

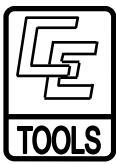
- Manufactured to original **OEM** standards
- All sheet metal contact areas heat treated
- All clamp parts **GUARANTEED**



C.E. TOOLING, INC.

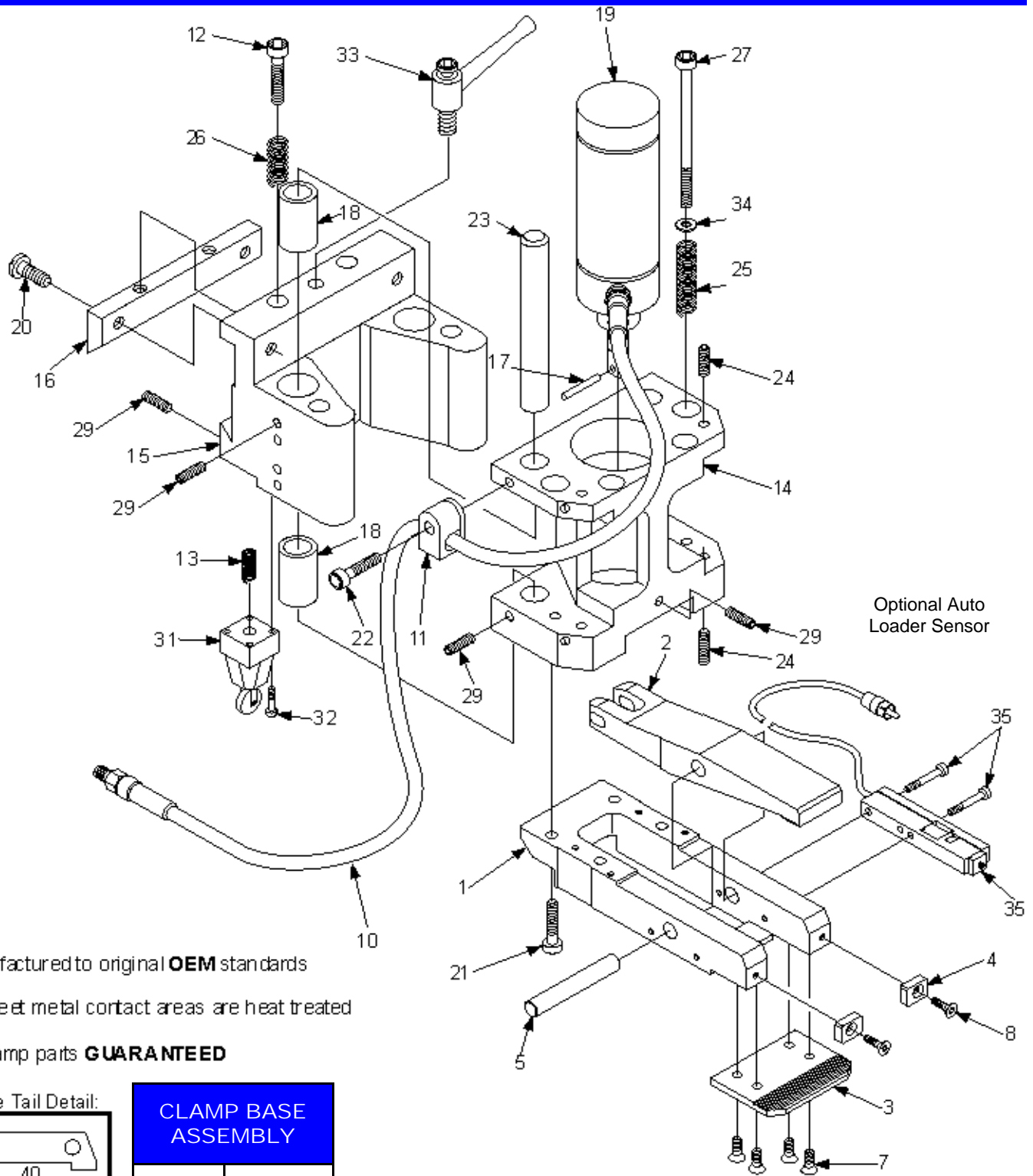
Coma Thick Clamp - Hydraulic

Dwg	API Part #	Amada Drawing #	Ref. CE old #	Description	Price
1-34	*A0109-CAA	826040		Complete Clamp Assembly	
1-8	*A0209-CBAA	826044		Clamp Base Assembly	
1	*A0309-B	826044		Clamp Base	
2	*A0409-CL	826054		Clamper	
3	*A0505-CP	826046		Clamp Plate	
4	*A0604-SP	826043		Stopper Plate	
5	*A0798	M13X80		Straight Pin	
7	*A0833	M6 x 18		Screw - 10pcs-M6X18 /Clamp Plate	
8	*A0833	M6 x 18		Screw - 10pcs-M6X18/Stopper Plate	
N/A	*A0840	N/A		Shims .010"- 10 pcs	
N/A	*A0841	N/A		Shims .003"- 10 pcs	
N/A	*A0842	N/A		Shims .005"- 10 pcs	
35	*A0855	8635270D		Sheet Sensor (for Auto Loader)	
N/A	*A0856	N/A		Sheet Sensor- 4 Pin Plug	
40 or 45	*A0860	823016 / 803090		Dove Tail System (Guide Plate)	
31	*A0871	6WPH200-1		Head	
10	*A8227	827577		Hydraulic Hose	
11	*A0896	N/A		Hose Clamp Holder	
22	*A0834A	N/A		Screw	
18	*A0869	N/A		Linear Bearing	
19	*A0873	N/A		Hydraulic Cylinder	
14	*A0872B	N/A		Clamp Body - Piston Side	
20	*A0875	N/A		Bolt	
15	*A0880	N/A		Clamp Body - Dove Tail Side	
16	*A0881	N/A		Dove Tail Plate	
17	*A0873i	N/A		Pin	
23	*A0883	N/A		Rod	
27	*A0884	N/A		Bolt	
34	*A0885	N/A		Washer -10pcs	
25	*A0886	N/A		Spring	
12	*A0887	N/A		Shoulder Bolt M8X25XM6-1	
26	*A0888	N/A		Spring	
29	*A0889	N/A		Set Screw - M6X6-10 pcs	
32	*A0890	N/A		Bolt - 10 pcs	
13	*A0891	N/A		Spring	
21	*A0895	N/A		Bolt	
33	*A0812	KR12X20		Clamp Lever	
24	*A0831B	N/A		Set Screw M6X8 - 10 pcs	



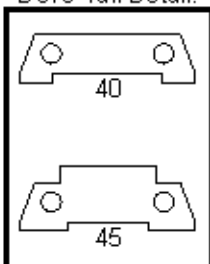
C.E. TOOLING, INC.

Coma Thick Clamp - Hydraulic

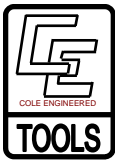


- Manufactured to original **OEM** standards
- All sheet metal contact areas are heat treated
- All clamp parts **GUARANTEED**

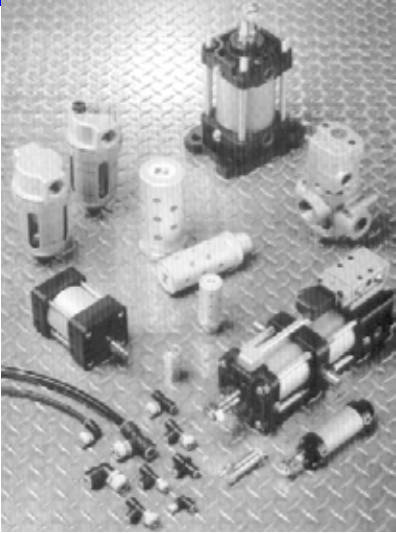
Dove Tail Detail:



CLAMP BASE ASSEMBLY	
Length	223mm
Width	80mm
Height	30mm



PNEUMATIC PARTS



To Determine NPT Size		
Outside Diameter Measurement		NPT Size
3/8"	=	1/8"
1/2"	=	1/4"
5/8"	=	3/8"
3/4"	=	1/2"

To Determine Tube Size		
Outside Diameter Measurement		Metric Tube Size
.2362"	=	6mm
.3150"	=	8mm
.3937"	=	10mm
.4724"	=	12mm



WHEN ORDERING:

A) Find the correct fitting from the above drawing

B) To determine tube size –measure outside diameter of tube

C) To determine NPT size-measure outside diameter USE CONVERSION CHART

TUBING			
Part #	Amada DWG	Description	
*EA4111	6X4	Metric Tubing 6 X 4	
*EA4112	8X5	Metric Tubing 8 X 5	
*EA4113	10X6	Metric Tubing 10 X 6	
*EA413	12X8	Metric Tubing 12 X 8	

Coupling <i>Style 2</i>			
Part #	Amada DWG	Description	Price
*A4111-2	6X4	Coupling 6	
*A4112-2	8X5	Coupling 8	
*A4113-2	10X6	Coupling 10	
*A413-2	12X8	Coupling 12	



AIR COMPONENTS

Part #	Amada DWG	Description	Price
*EA4003	J2773B5001	Ross Valve Complete Assembly	
*EA4004	J2773A4950		
*EA4005	J273B5952		
*EA4009	101K77	Ross Rebuild Kit Upper	
*EA4012	496K87	Ross Rebuild Kit Lower	
*EA4015	N/A	Ross Valve Solenoid Coil 100VAC	
*EA4017	QV2	QV2-15 Diaphragm	
*EA4018	QV2-15	QV2-15 Unit	
*EA4021	SS-40A	Silencer Muffler SS-40A	
*EA4022	SS-25A	Silencer Muffler SS-25A	
*EA4023	SS-15A 1/2"	Silencer Muffler SS-15A	
*EA4025	SS-15AA 3/4"	Silencer Muffler L3.8" D1.3	
*EA4028	N/A	Regulator NAR-4000	
*EA4029	N/A	Regulator NAR-2000	
*EA4030	741634209	Regulator AR400	
*EA4031	EFR-10	Regulator	
*EA4032	MFR-15	Regulator	
*EA4033	N/A	Regulator-Filter	
*EA4035	N/A	Pressure Gauge	
*EA4040	N/A	Lubricator NAL 400	
*EA4041	N/A	Lubricator Rebuild Kit NAL400	
*EA4042	N/A	Lubricator NAL 2000	
*EA4043	N/A	Lubricator Bowl & Guard AL400	
*EA4044	EAL-10	Lubricator	
*EA4049	N/A	Rebuild Kit Auto Index Brake	
*EA4050	N/A	Air Filter AF400	
*EA4051	N/A	Air Filter Bowl & Guard AF400	
*EA4052	N/A	Air Filter Rebuild Kit AF400	
*EA4053	N/A	Air Filter NAF 2000	
*EA4059	826536	Reposition Hold Down Cylinder Pad	
*EA4060	CAG-80-50	Reposition Hold Down Cylinder	
*EA4061	NCVPT63-1101	Sheet Support Cylinder (Shears)	
*EA4064	N/A	Striker Cylinder-New	
*EA4065	N/A	Striker Cylinder-Rebuild Kit-New	
*EA4070	SCB40x300st	Tool Balancer-Cylinder-Long	
*EA4071	SCB40x150st	Tool Balancer-cylinder-Short	
*EA4072	SA-8	Tool Balancer-Silencer	
*EA4073	RB1W-14	Tool Balancer-Ring Ball	
*EA4074	480897	Tool Balancer-Knob	
*EA4075	4 1/2", 3 1/2"	Tool Balancer-Controller	
*EA4087	N/A	Cylinder Flip Up Actuator	
*EA4088	36055451	Cylinder Flip Up Actuator-Universal Elbow	
*EA4090	5ER-8E-10	Pneumatic Solenoid Valve 5ER-8E10	
*EA4091	3EC-8E-10	Pneumatic Solenoid Valve 3EC-8E10	
*EA4097	75417109	Pneumatic Solenoid Valve VZ4150-1G	

TUBING FITTINGS

Dwg #	Part #	Amada DWG	Description	Metric Tube	NPT Size	Price
1	*EA4120	N/A	Male Connector	6	M5x.8	
1	*EA4121	N/A		6	1/8	
1	*EA4123	N/A		6	1/4	
1	*EA4125	N/A		8	1/8	
1	*EA4127	N/A		8	1/8	
1	*EA4129	N/A		8	1/4	
1	*EA4131	N/A		10	3/8	
1	*EA4133	N/A		10	1/2	
1	*EA4135	N/A		12	1/4	
1	*EA4137	N/A		12	3/8	
1	*EA4139	N/A	12	1/2		
2	*EA4141	N/A	Straight Union	6	N/A	
2	*EA4143	N/A		8	N/A	
2	*EA4145	N/A		8	N/A	
2	*EA4147	N/A	12	N/A		
3	*EA4151	N/A	Male Elbow	6	M5x.8	
3	*EA4153	N/A		6	1/8	
3	*EA4155	N/A		6	1/4	
3	*EA4157	N/A		6	3/8	
3	*EA4159	N/A		8	1/8	
3	*EA4161	N/A		8	1/4	
3	*EA4163	N/A		8	3/8	
3	*EA4165	N/A		10	1/4	
3	*EA4167	N/A		10	3/8	
3	*EA4169	N/A		10	1/2	
3	*EA4169	N/A	12	1/2		
3	*EA4171	N/A	12	1/4		
3	*EA4173	N/A	12	3/8		
3	*EA4175	N/A	12	1/2		
4	*EA4181	N/A	Union Elbow	6	N/A	
4	*EA4183	N/A		8	N/A	
4	*EA4185	N/A		10	N/A	
4	*EA4187	N/A		12	N/A	
5	*EA4189	N/A	Branch Tee	6	N/A	
5	*EA4190	N/A		6	N/A	
5	*EA4191	N/A		6	M5x.8	
5	*EA4193	N/A		6	1/8	
5	*EA4195	N/A		6	1/4	
5	*EA4197	N/A		6	3/8	
5	*EA4201	N/A		8	1/8	
5	*EA4203	N/A		8	1/4	
5	*EA4205	N/A		8	3/8	
5	*EA4207	N/A		10	1/4	
5	*EA4209	N/A	10	3/8		
5	*EA4211	N/A	10	1/2		
5	*EA4213	N/A	12	1/4		
5	*EA4215	N/A	12	3/8		
5	*EA4217	N/A	12	1/2		
6	*EA421	N/A	Union Tee	6	N/A	
6	*EA423	N/A		8	N/A	
6	*EA425	N/A		10	N/A	
6	*EA427	N/A		12	N/A	
6	*EA431	N/A	Male Run Tee	6	M5x.8	
6	*EA433	N/A		6	1/8	
6	*EA435	N/A		6	1/4	
6	*EA437	N/A		6	3/8	
6	*EA439	N/A		8	1/8	
6	*EA441	N/A		8	1/4	
6	*EA443	N/A		8	3/8	
6	*EA445	N/A		10	1/4	
6	*EA447	N/A		10	3/8	
6	*EA449	N/A		10	1/2	
6	*EA451	N/A	12	1/4		
6	*EA453	N/A	12	3/8		
6	*EA453	N/A	12	1/2		



C.E. TOOLING, INC.

L. M. Guide Rails and Bearings

Part #	Amada Dwg	Description	Price
A8892	74303608	LM Guide Rail: Y Axis P345K	
*EA8893	74160690	LM Guide Rail: X Axis P345K	
*EA8894	823006	LM Guide with Bearings: Coma 557,567 X Axis	
*EA8895	803105	LM Guide Rail with Bearings: Coma 555,Vela 355 Y Axis	
*EA8896	803084	LM Guide Rail with Bearings: Coma 555, Vela 355 X Axis	
*EA8897	823036	LM Guide Rail with Bearings: Coma 567 Y Axis	
*EA8898	824035/7932 021	LM Guide Rail with Bearings: Pega 344 Y Axis	
*EA8899	813123	LM Guide Rail with Bearings: Pega 344 X Axis	
*EA9500	N/A	LM Guide Bearings: X Axis	
*EA9501	N/A	LM Guide Bearings: Y Axis	
*EA9502	N/A	LM Guide Bearings: X Axis Coma Plasma	

Ballscrews

Part #	Amada Dwg #	Description	Price
*A8900	N/A	Ballscrew: Aries Y Axis	
*A8910	813106	Ballscrew: Pega 344 X & Y, Pega 345Q Y Axis	
*A8911	7932030	Ballscrew: Pega 357, Coma 557, 567 X Axis	
*A8912	825507	Ballscrew: Coma 567 Y Axis	
*A8913	823011	Ballscrew: Coma 567 X Axis	
*A8914	823904	Ballscrew: Coma 555 X Axis	
*A8915	825595	Ballscrew: Coma 555 X & Y Axis, Vela 355 X & Y Axis, Coma 557, Pega 357 Y Axis	
*A8916	7932129A	Ballscrew: Pega 345Q X Axis	
*A8917	7932062A	Ballscrew: Pega 345 King X axis	
*A8918	7932112	Ballscrew: Pega 345 King Y axis	

Ballscrew Hardware

Part #	Amada Dwg	Description	Price
*A8959	AN-05	Crown Nut	
*A8960	AN-06	Crown Nut	
*A8961	AW-06	Crown Washer	
*A8962	AW-05	Crown Washer	
*A9448	7205ADB	Bearing Set	
*A9450	7206CDFT/ GNP4	Bearing Set	
*A9454	7206CDB/ GNP4	Bearing Set	
*A9626	AF2340-F0	Oil Seal	
*A9617	AB2240-G0	Oil Seal	
*A9630	S48 X 62 X 9	Oil Seal	

Ballscrew Kits Includes: Bearing Sets, Oil Seals, Crown Nuts & Washers

Part #	Amada Dwg #	Description	Price
*A8930	74600636	Ballscrew Kit: Pega 344 X & Y Axis, Pega 345Q Y Axis	
*A8931	74600536, 74600949	Ballscrew Kit: Coma 557, Pega 357 Y Axis, Coma 555, Vela 355 X & Y Axis	
*A8932	74600535, 74600946	Ballscrew Kit: Pega 357, Coma 557, Coma 567 X Axis	
*A8933	74600948	Ballscrew Kit: Coma 567, Y Axis	
*A8934	74600950	Ballscrew Kit: Coma 567, X Axis	
*A8935	74600947	Ballscrew Kit: Coma 555, X Axis	
*A8936	74600951	Ballscrew Kit: Pega 345Q, X Axis	
*A8937	74600836	Ballscrew Kit: Pega 345K X Axis	
*A8938	74600837	Ballscrew Kit: Pega 345K Y Axis	



C.E. TOOLING, INC.

Hydraulic Parts

Part #	Amada Drawing	Description	10	Price
POA8076	74398034	Accumulator Bladder J-070-1 (04PC + Late Model 6M)		
POA8077	74309299	Accumulator Bladder R210-1 Bld 6M		
POA8078	N/A	Accumulator Bladder N-150-20L HYd Shear		
POA8090	74098018	Accumulator Charge Kit NVG 3 1/4		
POA8192	3WE10A-A/0 AW	Wet Clutch Control Valve		
POA8195	KH77	Pressure Transducer		
POA8225	N/A	Hydraulic Hose - Valve To Accumulator		
POA8226	N/A	Hydraulic Hose - Clutch to Valve		
POA8229	N/A	Hydraulic Hose - Air Clutch to Valve		



Hydraulic Filters

Part #	Amada Drawing #	Description	10	Price
*EA8300	UCF-03-10P	Filter UCF-03-10P		
*EA8302	74398986	Filter PGFA-03-3-6M		
*EA8303	74398501	Filter PGFA-03-3-10U		
*EA8305	74163253	Filter PGFA-06-3-3M		
*EA8307	74399005	Filter PGFA-06-3-6M		
*EA8311	74198178	Filter PGFA-06-3-10U		
*EA8313	74199072	Filter PGC-12-5-6M		
*EA8314	74398502	Filter PGC-12-5-10U		
*EA8315	74163254	Filter PGC-12-4-10U		
*EA8317	74369195	Filter HC-9021-FDP-8H		
*EA8320	74793762	Filter PUH-06A-3M		
*EA8322	74369194	Filter 270L110A		
*EA8323	74198178	Filter PG-351-A-03-10U-OR PGFA-06-03-10V		
*EA8330	74399202	Filter -DFBN-HC330		
*EA8331	74399203	Filter -DFBN-HC110		
*EA8332	74598831	Filter-DFBN-C240P5BM		
*EA8333	74163266	Filter - DFBN-HC240P3C		

Vipros Hydraulic Filter Kits

Part #	Amada Drawing	Description	10	Price
*EA8280	74361009	Filter Kit-Vipros 357Q		
*EA8281	74361010	Filter Kit-Vipros 255		
*EA8282	74361007	Filter Kit-Vipros 358		
*EA8283	74361008	Filter Kit-Vipros 358,368K		
*EA8284	74361003	Filter Kit-Vipros 345, 357, 367		
*EA8285	74361004	Filter Kit-Vipros 345, 357, 367		
*EA8286	74361001	Filter Kit-Vipros 345, 357, 367		
*EA8287	74361002	Filter Kit-Vipros 345, 357, 367		
*EA8288	74361005	Filter Kit-Vipros 558,568		
*EA8289	74361006	Filter Kit-Vipros 558,568		
*EA8290	74361011	Filter Kit -Vipros 358 King w/18PC Control		
*EA8291	74361012	Filter Kit -Vipros 358 King w/18 PC Control Version 2		
*EA8292	74361013	Filter Kit -Vipros 255 w/18PC Control Ver.2		

Control Lamps

Part #	Description	Price
POA6638	Bulb 24v 50ma 200B Panel	
POA6639	Bulb 24v 50ma 3000C Panel	
POA6640	Bulb 28v 6M Panel	

Fan Parts

Part #	Description	Price
POA6727	Fan 200v Servo Motor Cooling	
POA6728	Fan 100 v Hydraulic Clutch/ Brake Oil Cooling	
POA6729	Fan Hydraulic Cooling Fan	
POA6730	Fan Top: Clutch and Brake	



Clutch and Brake Parts

DESCRIPTION	Page
20 to 50 Ton Wet Clutch and Brake Assemblies	37
Coma 555, 557, 567 - Brake	37
Coma 555, 557, 567 - Clutch	37
CRANK Parts	35
Hydraulic Clutch and Brake	37
Miscellaneous Crank Parts	37
Octo 334 - Brake	36
Octo - Clutch	36
Pega 244 - Brake	36
Pega 244 - Clutch	37
Pega 344, 357, Vela 355 - Brake	36
Pega 344, 357, Vela 355 - Clutch	37
Pega King P345 - Brake	36
Pega King P345 - Clutch	36



Pega King P345 Clutch Parts

Part #	Amada Dw#	Description ²⁰	Price
*EA1006	207473	Friction Plate	
*EA1050	811125	Spline	
*EA1061	207558	Pressure Plate	
*EA1062	207557	Center Plate	
*EA1063	202549	Dust Seal	
*EA9276	200910	O-Ring	
*EA1013	203993	Spring	
*EA1300	207980	Clutch Assembly	
*EA1064	207444-BA	Rotary Seal Rebuild Kit	
*EA1023	202583-SP	Guide Shaft-Drive Stud	
*EA1040	201095	Washer	
*EA1041	201239	Nut	
*EA1060	207556-SPS	Drive Hub W/Studs	
*EA1065	202548	Piston	
*EA1066	207559	Cylinder: Pega King	
*EA1068	201901-EAA	Rotary Seal plus QRV Assembly	

Pega King-P345 Brake

Part #	Amada Dwg	Description ²⁰	Price
*EA2004	211735	Friction Plate	
*EA2112	811126B	Spline	
*EA2116	207978	Piston - Pega King	
*EA2117	2079728	Pressure Plate	
*EA2121	208292	Center Plate	
*EA9274	201734	O-Ring 190 X 7	
*EA9270	202528	O-Ring 59 X 5.33	
*EA2013	203746	Spring	
*EA2118	208291	Drive Hub W/Studs	
*EA2171	N/A	Rotary Seal Rebuild Kit	
*EA2400	209190A	Brake Assembly	

Crank Parts

Part #	Amada Dwg	Description	Price
*A4910	801010/801011	Crank Bushing	
*A4920	480164	Ram Pin Bushing	
*A4930	801012	Connecting Bushing	
*A4948	N/A	Nut KM18	
*A4949	N/A	Washer KM18	

Octo 334 Brake Parts

Part #	Amada Dwg	Description	Price
A1007	5033372	Friction Plate	
A2014	6011595	Spring	
A9250	AP-300	O-Ring P-300(O)	
A9242	AP-140	O-Ring P-140 (I)	
*A2300A	N/A	Brake Package	

***Included in package pricing**

Octo Clutch Parts

Part #	Amada Dw#	Description	Price
A1007	5033372	Friction Plate	
A1014	5033371A	Spring	
A9252	AP315	O-Ring P315(O)	
A9246	AP180	O-Ring P180 (I)	
*A1400	N/A	Clutch Package	

***Included in package pricing**



Pega-244 Brake Parts			
Part #	Amada Dwg	Description	Price
*A1005	7932040	Friction Plate	
*A9248	P-225	O-Ring P-225 (I)	
*A9254	P-340	O-Ring P-340(O)	

Pega 244 Clutch Parts			
Part #	Amada Dwg	Description	Price
*A1005	7932040	Friction Plate	
*A1008	801015	Piston	
*A1011	286040A	Spring	
*A1021	801073A	Guide Shaft	
*A1030	M16 X 120	Bolt 120	
*A1031	M16 X 140	Bolt 140	
*A1032	M16 X 160	Bolt 160	
*A9430	125 X 13	Flywheel Bearing	
*A9611	120X125X13	Oil Seal	
*A4009	101K77	Ross Valve Rebuild Kit (U)	
*A4012	496K87	Ross Valve Rebuild Kit (L)	

Hydraulic Clutch and Brake			
Part #	Amada Dwg	Description	Price
*EA1600	6013700	20-30 Ton Hydraulic Clutch and Brake	
*EA1700	6013725	50 Ton Hydraulic Clutch and Brake	

Pega 344, 357, Vela 355 Clutch Parts			
Part #	Amada Dwg	Description	Price
A1005	821220	Friction Plate	
A1008	801015	Piston	
A1011	286040A	Spring	
A1021	801073A	Guide Shaft	
*E1027	821130	Clutch Plate A ¹⁰	
A1030	M16 X 120	Bolt 120	
A1031	M16 X 140	Bolt 140	
*A1032	M16 X 160	Bolt 160	
*A9430	6020Z	Flywheel Bearing	
*A9611	100X12513	Oil Seal	
A4009	101K77	Ross Valve Rebuild Kit (U)	
A4012	496K87	Ross Valve Rebuild Kit (L)	
A1100	74600635	Part Package	
*Included in Package Pricing			

Pega 344, 357, Vela 355 Brake Parts			
Part #	Amada Dwg	Description	Price
A1005	821220	Friction Plate*	
A1008	801015	Piston*	
A2011	801034B	Spring*	
A4009	101K87	Ross Valve Rebuild Kit (U)*	
A4012	493K87	Ross Valve Rebuild Kit (L)*	
A2100	74600637	Brake Package	
*Included in package pricing			

Coma 555, 557, 567 Brake Parts			
Part #	Amada Dwg	Description	Price
A1005	821220	Friction Plate	
A1008	801015	Piston	
A2011	801034B	Spring	
A4009	101K77	Ross Valve Rebuild Kit(U)	
A4012	493K87	Ross Valve Rebuild Kit(L)	
*A2200	74600637	Brake Package	
*Included in package pricing			

Coma 555, 557, 567 Clutch			
Part #	Amada Dwg	Description	Price
A1005	821220	Friction Plate	
A1008	801015	Piston	
A1012	821041A	Spring	
A1022	821028	Guide Shaft	
*A1027	821130	Clutch Plate A ¹⁰	
A1031	M16 X 140	Bolt 140	
A1032	M16 X 160	Bolt 160	
*A9430	6020Z	Flywheel Bearing	
A9613	120X150X14	Oil Seal	
A4009	101K77	Ross Valve Rebuild Kit(U)	
A4012	496K87	Ross Valve Rebuild Kit (L)	
*A1200	74600634	Part Package	
*Included in Package Price			



TABLE TRANSFER BALLS 10

Part #	Amada Dwg	Description	Price
*AC8L	Get# etched on Item	Transfer Ball ___mm (___") Ball Size. Look for #etched on unit. 2 screws on ___mm spacing on diamond shaped metal plate.	
*AC8Y		Transfer Ball ___mm (___") Ball Size. 2 screws on ___mm spacing on diamond shaped metal plate.	
*A8699	7830287	Free Bearing for Vipros Brush Table Ball with point that sticks out.	

TABLE BRUSHES 10 *Replaces Old Ball Style*

The brushes are easy to assemble, same bolt hole spacing as the flange for the balls. Just need to remove 2 screws and replace with our brush.

Part #	Amada Dwg	Description 15	Price
*A290712-25		Package of 25 pieces 32mm (1-1/4") OD. Brush attached to table with 2 screws on 62mm spacing on diamond shaped metal plate.	25pc
*A290712-100		Package of 100 pieces 32mm (1-1/4") OD. Brush attached to table with 2 screws on 62mm spacing on diamond shaped metal plate.	100pc
*A290712-250		Package of 250 pieces 32mm (1-1/4") OD. Brush attached to table with 2 screws on 62mm spacing on diamond shaped metal plate.	250pc



Table brushes are easy to assemble, same bolt hole spacing as the flange for the balls. Just need to remove 2 screws and replace with our brush.

STRIP GUARD Adhesive Disc
 Install to face of stripper plate to prevent scratches and reduce noise

Stripper / Guide	Dia.	Qty	Part#	Price
1/2	.87	10pc	*A06082	
1-1/4	1.75	10pc	*A06084	
2"		10PC	*A06085	
3-1/2	3.67	10pc	*A06086	
4-1/2	4.67	10pc	*A06088	
8.5X11sheet			*A06080	

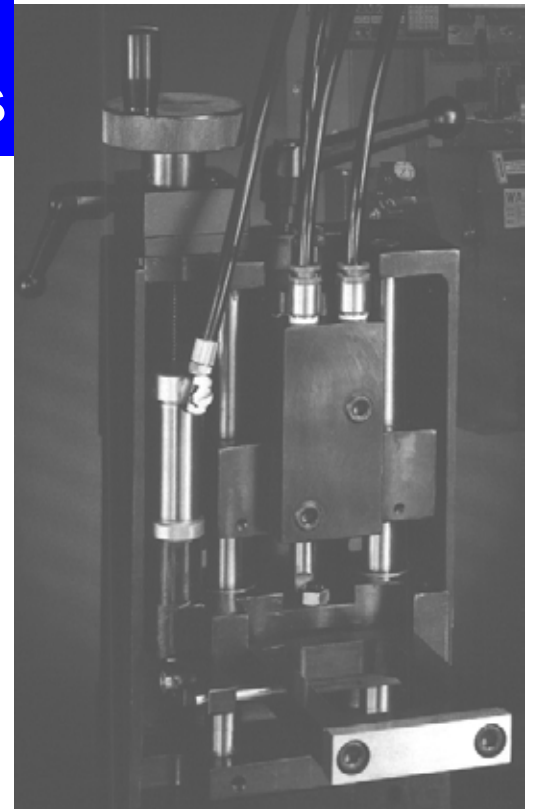
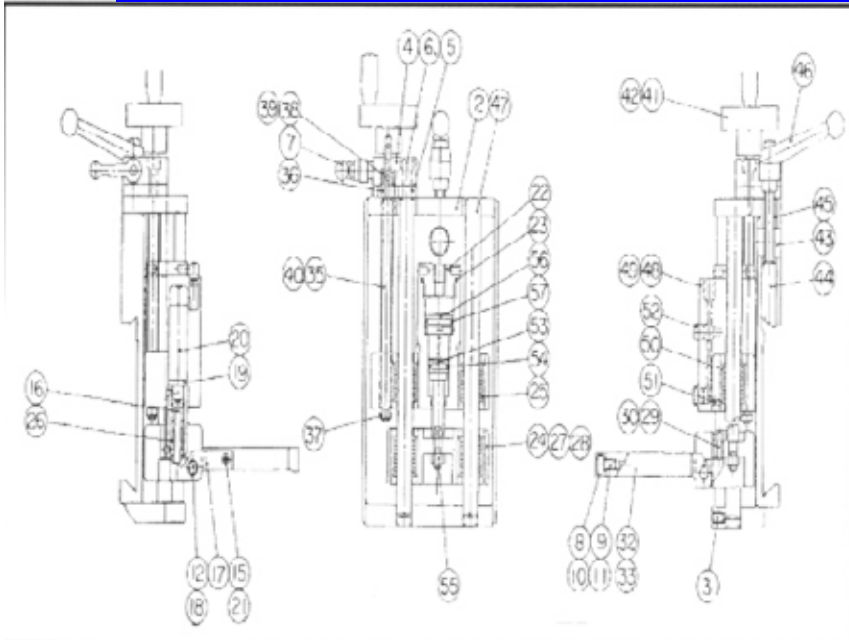
Reduces marring of material by the stripper. Just peel off adhesive backing, and attach to stripper face. Use sharp knife blade to cut out stripper opening.

DIE BRUSHES 10 *Fill empty Die Holders to help sheet slide over lower turret with less marking.*

Part #	Amada Dwg	Station	Qty->	1pc	4pc	8 pc	16 pc	32pc
*AATA-D-BRUSH	N/A	A 1/2" 1.000" Die O.D.						
*AATB-D-BRUSH	N/A	B 1-1/4" 1.875" Die O.D.						
*AATC-D-BRUSH	N/A	C 2" 3.500" Die O.D.						
*AATD-B-BRUSH	N/A	D 3-1/2" 4.938" Die O.D.						
*AATE-B-BRUSH	N/A	E 4-1/2" 6.250 Die O.D.						



RG-PRESS BRAKE Work Stopper Assemblies



Work Stopper					Work Stopper				
Part #	Dwg#	Amada Dwg	Description	Price	Part #	Dwg#	Amada Dwg	Description	Price
A0809	7	KR X 20	CLAMP LEVER 6mm		a8846kk	43	4128803	Lock Nut	
A0810	46	KR X 40	CLAMP LEVER 8mm		a8846ii	45	4128805	Collar	
A0831b	N/A	M6 X 8	Screw M6 X 8 Pkg of 10		a8846mm	22	4128809	Cap	
A0831c	3	M6 X 10	Screw M6 X10 Pkg of 10		a8846nn	56	4128808c	Piston	
A0831d	29	M6 X 16	Screw M6 X 16 Pkg of 10		a8846oo	53	4128807c	Piston	
A0831e	51	M4 X 6	Screw M4x,7x6 Pkg of 10		a8846pp	25	LM13UU	Linear Bearing	
A0834a	6	M6 X 25	Screw-socket Cap M6x25 10pc		a8846qq	26	LM6UU	Feed Screw Bearing	
A0839c	9	M6 X 10	Screw-socket Cap M6x10 10pc		a8846rr	15	6 X 36	Cdowel Pin	
A4087	20	7950002a	Cylinder-Flip Up Actuator		a8846ss	18	STW-8	Snap Ring 8M	
A8827	8	4128821	Finger Stop Pads		a8846tt	40	STW-6	Snap Ring 6M	
A8840	41	4128802	Hand wheel with handle		a8846vv	N/A	N/A	Male Connector	
A8841	35	4128800a	Feedscrew		a8846ww	52	1/8"	Plug	
A8845A	2-56	4128816d	Work Stopper Assembly-Flup Up		a8846xx	30	M6 Type3	Hex Nut	
A8846	N/A	4128796	Work Stopper Assembly-Non Flip up		a8846yy	36	NB-6	Feedscrew-Bearing	
a8846aa	2	4128797d	BODY		a8846zz	16	4128818	Feedscrew-Linear Bearing Shaft	
a8846bb	24	4128820c	Holder		a8846zz1	38	4128801a	Collar	
a8846cc	48	4128806a	Cylinder		A9209	49	1BP-10	O-Ring P-10-	
a8846dd	32	4128811b	Main Flip Arm		A9221	54	1BP-14	O-Ring P-14	
a8846ee	17	4128819b	Flip up Lever		A9226	57	1BP-21	O-Ring P-21	
A8846ff	5	4128799	Bearing Case		A9228a	23	S-28	O-Ring S-28	
a8846gg	4	4128798a	Bearing Retainer						
a8846hh	47	7950004	Guide Rod						
a8846ii	12	4129243	Hinge Pin						
a8846ii	44	4128804a	Lock Bar						

Remote Foot Pedal

*A8821 3003502 Remote Foot Pedal



C.E. TOOLING, INC.

Maintenance Supplies & Accessories

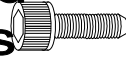


Dowel Pins



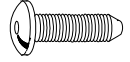
Dia.	Length	Cat. No	Qty per box	Price
	1/2"	*A-DP125X500	25	
1/8"	3/4"	*A-DP125X750	25	
	1"	*A-DP125X1000	25	
	3/8"	*A-ODP187X375	25	
	1/2"	*A-DP187X500	25	
3/16"	3/4"	*A-DP187X750	25	
	1"	*A-DP187X1000	25	
	2"	*A-DP187X2000	25	
	3/8"	*A-DP250X375	25	
	1/2"	*A-DP250X500	25	
1/4"	5/8"	*A-DP250X625	25	
	3/4"	*A-DP250X750	25	
	1"	*A-DP250X1000	25	
	1/2"	*A-DP312X500	25	
5/16	3/4"	*A-DP312X750	25	
	1"	*A-DP312X1000	25	
	1/2"	*A-DP375X500	25	
3/8"	3/4"	*A-DP375X750	25	
	1"	*A-DP375X1000	25	
	1 1/2"	*ADP375X1500	10	

Socket Head Cap Screws



Dia.	Length	Cat. No	Qty per box	Price
5-40	1/4	*A-SHC01	10	
6-32	1/2	*A-SHC02	10	
8-32	3/4	*A-SHC03	10	
8-32	7/8	*A-SHC04	10	
10-32	1/2	*A-SHC05	10	
1/4-20	1/2	*A-SHC06	10	
1/4-20	1	*A-SHC07	10	
5/16-18	1 1/4	*A-SHC08	5	
5/16-18	1/4 inc	*A-SHC09	5	
5/16-18	2 1/2	*A-SHC10	5	
1/2-13	1 3/4	*A-SHC11	5	
1/2-13	2	*A-SHC12	5	
1/2-13	2 1/2	*A-SHC13	5	
1/2-13	2 3/4	*A-SHC14	5	
1/2-13	3 1/4	*A-SHC15	5	
1/2-13	3 1/2	*A-SHC16	5	
M5X.8	10mm	*A-SHC17	5	
M6X1	25mm	*A-SHC18	5	
M8X1.25	25mm	*A-SHC19	5	
M12X1.75	50mm	*A-SHC20	5	
M12X1.75	70mm	*A-SHC21	5	
M12X1.75	90mm	*A-SHC22	5	

Button Head Cap Screws



Size	Length	Cat. No	Qty per box	Price
8-32	1/4	*A-BHC23	10	
10-32	1/4	*A-BHC24	10	
M3x.5	4mm	*A-BHC24	10	
M4x.7	5mm	*A-BHC26	10	
M6x1	16mm	BHC27	10	



Flat Head Cap Screw

Size	Length	Cat. No	per box	Price
1/4-20	3/8	*A-FHC28	10	
M5x.8	10mm	*A-FHC29	10	



Set Screws

Size	Length	Cat. No	per box	Price
10-32	3/8	*A-SSC30	10	
1/4-20	3/8	*A-SSC31	10	
M4X .7	6mm	*A-SSC32	10	
M4X.7	12mm	*A-SSC33	10	
M6X1	10mm	*A-SSC34	10	



Spring Plungers

Price per Set

Used in Character Stamp, Under Thumb Clip *A-SS-SP1

Used in Strippit Quick-Set Guide *A-SS-SP2

Punch Retaining Clips

Price per Set

Amada Thick 1/2A *A-ATAPC

Strippit 1/2SA *A-SYAPC

Lock Washers

Size	Cat No	Qty per bag	Price per bag
3/8 M10	*A-LW01	5	
1/2 M12	*A-LW02	5	

Polishing Stone

A hard structured stone perfect for removing galling from punch tip.
\$14.00 Cat No. *AGCS-32180K

Stripper Bolts

Size	Length	Cat No	Price
#10	3/8	*A-SBC__	
#10	1/2	*A-SBC__	
1/4"	3/8	*A-SBC35	
1/4"	1/2	*ASBC36	
5/16"	1/2	*ASBC37	

Strippit/Amada Thin Drop-In Guides Retaining Clip



Tru-Arc Pliers
*APLY

Diamond Needle File

Use to notch dies for better slug retention. .1+ sq. file 200/240 grit.
Cat No. *A-FTN-121420

Spanner Wrench

*A-SPWR



Sheet Lubricant CLM-50 oil base or Poly-Form water soluble

Reduce galling, increase tool edge life, and improve stripping. Use with standard tools, forming and cluster (gang) punching. To use, simply spray or wipe this premixed lubricant on every 3-6 sheets placed in press. CLM-50 Formula may be mixed with kerosene to conserve, or for easier sheet cleaning when plating is to be performed. Poly-Form is water soluble, but should not be thinned out.

Description	CLM-50	Poly-Form	Price
12% spray	*ACL50-12	*APOLYF-12	
1 Gallon	*ACL50-64	*APOLYF-64	
4 Gallon	*ACL50-4G	*APOLY-4G	

CLM L2-71 Extreme Pressure Grease

*A-L271-4	One (4%) Jar	
*A-L271-16	One (16%) Tube	
*A-L271-64	One (64%) Tub	

Oil Seals and U Cups

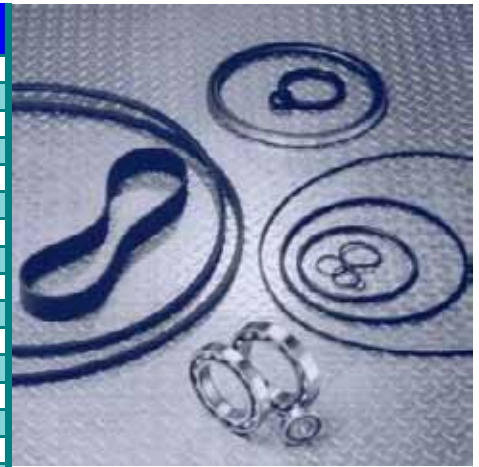
Part #	Amada Dwg #	Description	Price	
*A9607	SB90 X 120 X 13	Oil Seal		
*A9609	SB95 X 120 X 13			
*A9611	SB100 X 125 X 13			
*A9613	SB120 X 150 X 14			
*A9614	SB130 X 160 X 14			
*A9615	SB290 X 330 X 18			
*A9616	SB270 X 300 X 15			
*A9617	AB2240GO			
*A9619	AC1013AO			
*A9621	AB1700EO			
*A9623	AG3982ED			
A9625	AF1535GO			
*A9626	AF2340-FO			
*A9630	S48 X 62 X 9		U Cup	
*A9650	40 X 50 X6			
*A9653	30 X 45 X 10			
*A9656	12.5 X 22.5 X 8.4			
*A9659	1.188 X 1.5 X .156			
*A9662	.750 X 1.0 X .125			

Timing Belts

Part #	Amada Dwg	Description	Price
*A9138	225-H-100	Timing Belt	
*A9141	430H-200		
*A9142	420H-200		
*A9144	210H-200		
*A9147	450H-100		
*A9150	850H-150		
*A9153	390H-200		
*A9154	410H-200		
*A9155	1505 X 8M X 1520L		
*A9156	600H-100		

Bearings

Part #	Amada Dwg #	Description	Price
*A9422	6001z	Bearing	
*A9424	6003zz		
*A9425	6022LU		
*A9426	6004zz		
*A9427	6205zz		
*A9428	6018		
*A9430	6020zz		
*A9432	6022zz		
*A9435	6201zz		
*A9436	6203zz		
*A9440	6005zz		
*A9442	6208zz		
*A9443	6217zz		
*A9444	7001		
*A9446	7204DB		
*A9448	7205ADB		
*A9450	7206CDFT/ GNP4		
*A9454	7206CDB/ GNP4		
*A9500	N/A	Bearing - LM Guide X-Axis	
*A9501	N/A	Bearing - LM Guide Y-Axis	
A9502	N/A	Bearing - LM Guide X Axis Coma Plasma	



O-Rings

Part #	OEM Dwg #	Price
*A9209	P-10	
*A9220	P-12	
*A9222	P-16	
*A9224	P-18	
*A9226	P-21	
*A9227	P-22	
*A9228	P-26	
*A9228A	S-28	
*A9229	P-29	
*A9230	P-32	
*A9230A	S-35	
*A9231	P-39	
*A9232	P-44	
*A9233	P-46	
*A9234	P-50A	
*A9235	P-55	
*A9236	P-60	
*A9236A	P-58	
*A9238	P-70	
*A9240	P-75	
*A9242	P-140	
*A9244	P-130	
*A9246	P-180	
*A9248	P-225	
*A9250	P-300	
*A9252	P-315	
*A9254	P-340	
*A9256	S-42	
*A9258	S-44	
*A9260	S-53	
*A9262	S-56	
*A9264	G-55	
*A9266	G-75	
*A9268	G-95	
*A9270	59.00 X 5.33	
*A9272	69.4 X 3.10 VITON	
*A9274	190X7	
*A9276	266X7	
*A9280	ARP-568-136	
*A9281	AS568-235HS90	
*A9257	S-40	

NCT³ Turret Automated

Reduce your cost per hole to below \$.01 each Tap up to 180 holes a minute. (Depending on ram speed) Pitch insert change in minutes. Roll form taps. No minimum distance between tapped holes.





Turret *Restoration* - Perma Sleeves

Perma-Sleeve is a permanent and economical solution to upper turret bore wear of Amada punch presses. It eliminates the need for replacing the costly upper turret disk.

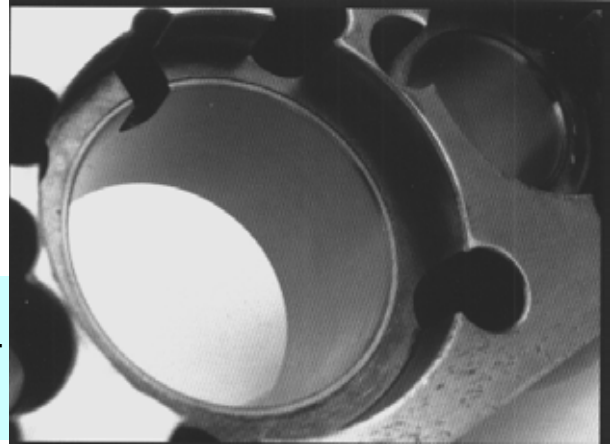
Have you been experiencing any of the following signs?

- Is the tool guide loose in the upper turret bore?
- Have you been dulling tools excessively?
- Are you breaking punches or dies?
- Having trouble maintaining tool alignment?
- Is burring a problem?

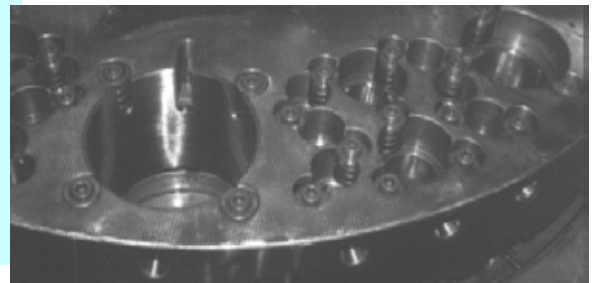
Over time the upper turret bores wear and become oversized and egg-shaped. This is a common occurrence, and if left untreated will greatly increase tooling costs and dramatically reduce accuracy.

Installation of Perma-Sleeve is accomplished at your site, at your convenience and without removing the upper turret disk, thus minimizing down time. Time needed depends on the amount of stations sleeved, however a complete turret usually takes two days. After installation of, a single sleeve, an outside track, or the complete turret, your machine will again achieve the desired tolerances and extended tooling life that you need to stay competitive. **Perma-Sleeves carry a 36 month warranty that covers parts and labor.**

In the event a replacement sleeve is required in the future, sleeves can be installed by your own staff.



Turret Shown with Perma-Sleeve



Total Cost for Complete Turret:

44 or 56 sta. turret = \$_____ 72 sta. turret \$_____

Octo-Rack Exchange Program \$_____

Cost includes parts and labor. Travel expense is on a cost incurred basis 36 month warrantee: parts and labor

Per Station Cost to Sleeve only Specific Worn Stations.

1/2" Sta. A 5

3-1/2" Sta. D

1-1/4" Sta. B 5

4-1/2" Sta. E

2" Sta. C

Auto Index

Individual Station Sleeving will require charge for Travel and expenses on a cost incurred basis.

Order through CE to receive *REWARDS DOLLARS* = 5% of purchase costs to be used towards turret or duplicator Tools (punches & dies.)

LUBRICATION



OIL-AIR BLOW SYSTEM KITS

Retrofit your Amada punch press to take advantage of longer lasting tooling designs to extend the life of your punches, guides, and turret bores. Installed on Amada machines, to make use of oil-air mixture which is injected through the machines striker, sending lubricate between the punch, guide, turret, and at punch tip. This is a state of the art system that you can install on your machine yourselves. Compatible for use with all air-blow or lube system style tooling.

Replacement Lubrication Parts

Part #	Amada Dwg	Description	Price
*EA5036	SK505	Pump	
*EA5041	U84MA2	Distribution Block –Pega/Vela/Coma	
*EA5047	U8RM	Distribution Block –Octo	
*EA5048	N/A	Distribution—Conversion Kit	
*EA5051	M6716-6	Flex Lines 32" Length 4mm	
*EA5052	M6716-6	Flex Lines 12" Length 4mm	
*EA5058	N/A	Copper Tubing 12' Length 4mm	
*EA5059	N/A	Copper Tubing 12' Length 6mm	
*EA5062	N/A	Grease Pump Reservoir Bowl - New Style	
*EA5067	N/A	Distribution Limit Switch	

Switches

10

Proximity Switches

10

Part #	Amada Dwg #	Description	Price
POA6430	TLW3MB1 or TL-X5F2-7	Proximity Switch	
POA6431	BES-516-105-BOX or BES-516-105-BOC-03	Proximity Switch	
POA6432	BES-516-105AOH or BES-516-105-BOC-03	Proximity Switch	
POA6433	BES-516-111-BOX	Proximity Switch	
POA6434	BES-516-319-PGV (Same as #A6436)	Proximity Switch	
POA6435	BES-516-325-GOX	Proximity Switch	
POA6436	BES-516-329GOX or TL-X2E1-7	Proximity Switch	
POA6438	BES-516-340-HOY or TL-T5E2-7	Proximity Switch	
POA6439	BES-516-344-HOL	Proximity Switch	
POA6440	BES-516-345-MO	Proximity Switch	
POA6442	BES-516-300-S76 (Same as #A6440)	Proximity Switch	
POA6443	BES-516-370 (Same as #A6436)	Proximity Switch	
POA6444	TL-T5E1-7	Proximity Switch	
POA6445	TL-T5E2-7	Proximity Switch	
POA6446	TL-W5E1	Proximity Switch	
POA6447	TL-X2E1-7	Proximity Switch	
POA6448	TL-X2F1-7	Proximity Switch	
POA6449	TL-X4E1-7	Proximity Switch	
POA6450	TL-X5E1-7	Proximity Switch	
POA6451	TL-X5F2-7	Proximity Switch	
POA6452	TL-X5F3-7	Proximity Switch	
POA6453	TL-H20-ME1	Proximity Switch	
POA6454	E2E-X10ME1-N	Proximity Switch	
POA6454A	E2E-X2B1	Proximity Switch	
POA6455	E3S-5DE-41	Proximity Switch	
POA6456	E3S-5LE-41	Proximity Switch	

Part #	Amada Drawing #	Price
POA6041	AH22-FR01-Stop Switch	
POA6044	AH22-GL1G10H	
POA6047	AH22-J2A11A	
POA6050	AH22-J2B20A	
POA6053	AH22-JC3142	
POA6056	AH22-JC7143	
POA6059	AH22-JC7G143A	
POA6060	AH22-VR01	
POA6065	AH22-Q2-R02	
POA6068	AH22-Q2R-11	
POA6071	AH22-ZMWH	
POA6072	AH22-FY10	
POA6073	SPS-8T Pressure Switch	
POA6074	AH25-SFG10-6M Power On Switch	
POA6075	AH25FR-6M Power Off Switch	
POA6077	AH30-FG10 Same As - AR30FOR-10G	
POA6080	AH30-FY10 Same As - RCa470-FY1 & R30FOR-10Y	
POA6083	AH30-G10 Same As- RCa470-FG1 Start witch	
POA6084	AR30-FOR01R-Stop Switch	
POA6086	AH30-J2A01A	
POA6089	AH30-L5W22	
POA6092	AH30-LG10	
POA6095	AH30-P210 Same As - RCa470-P21	
POA6098	AH30-P220 Same As - RCa470-P22	
POA6101	AH30-P2B01	
POA6104	AH30-P2B10	
POA6107	AH30-P3B11	
POA6110	AH30-V1R01 Same As- RCa470-VR1 Stop sw.	
POA6113	AR30-V2R-01R-Stop	
POA6120	1BS5000	
POA6121	BZ-2R-J	
POA6173	6m mode selector-keyed	
POA6174	6m mode selector-non keyed	
POA6175	3000C Latching Switch	
POA6176	3000C momentary switch	

**FABRICATING TOOLS
and Accessories for most
Punching, Bending and
Shearing Equipment**



C.E. TOOLING, INC.

**FORMING AROUND
THE WORLD**



**MANUFACTURING TURRET PRESS
TOOLING SINCE 1966**

www.cetooling.com

C.E. TOOLING, INC.



Die-Set, Brake Press, Iron Worker, Shears, C-Frame, Tube&Pipe

Specializing in tooling and machine parts for:

**Amada, Behrens, Boschert, Chassis Maker, Di-Acro[®],
Ehrt, Euromach, Finnpower, Haco, Murata Wiedemann,
Nisshinbo, Omes, Pullmax, Rainer, Roper Whitney,
Salvagnini, Simasv, Strippit[®], Trumpf, Raskin, W.A. Whitney
and similar presses**



CE TOOLING, INC.
2560 W. Brooks Ave.
N. Las Vegas NV 89032

sales@cetooling.com

Tel. 702 736-2598

www.cetooling.com

Fax 702 736-3038



LOCAL SALES REPRESENTATIVE
DISTRIBUTORS

