



C.E. TOOLING

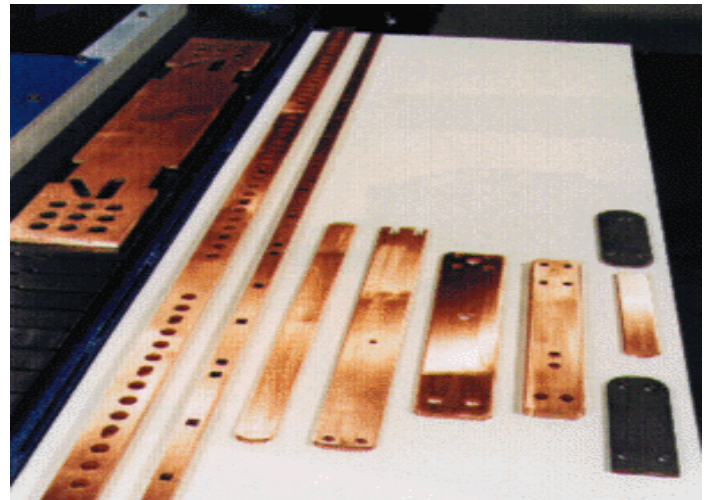
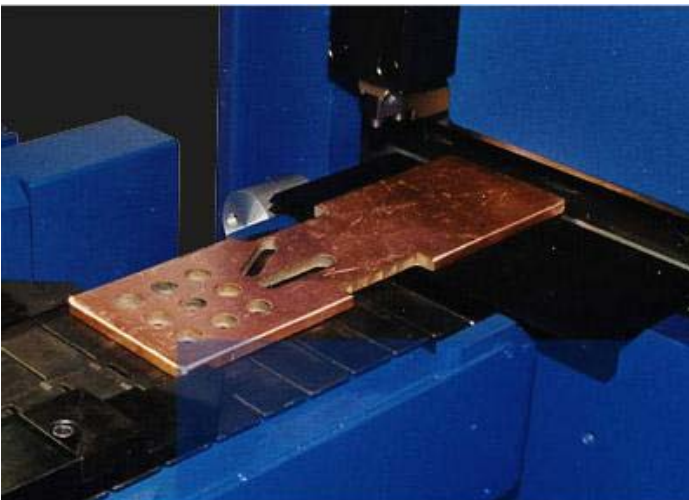
Section

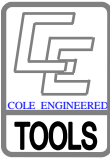
9.4

EHRT BUSBAR PUNCHING MACHINES
Hole Cut 40-6/9-2000, EB30 CNC, EB40 CNC



EHRT TOOLING





ADDITIONAL COSTS FOR NON-STANDARD OPTIONS



RADIUS OR 45° CHAMFER, Punch Add On, per corner

With Length under 1.625 and any size Radius or Chamfer	Corners 1-3 # x \$10.00	4(all) \$10.00
With Length over 1.625 & .032 maximum Radius or Chamfer	# x \$10.00	\$30.00
With Length over 1.625 and Radius or Chamfer over .032(.8mm)	# x \$15.00	\$40.00
Add On To All Dies any size Radius or Chamfer	# x \$10.00	\$10.00

Add 25% to set price for Clearance of .003(.8mm) or less

Add 50% to die price for Solid Dies.

10 STANDARD SHAPES

RECTANGLE • SQUARE • OBROUND • SINGLE-D • DOUBLE-D • QUAD-D • HEXAGON • OCTAGON
ADD \$10 PER SET FOR: LONG-D & EQUILATERAL

EXPEDITING SERVICES

1FDS • ORDER BY 3 pm, Order Ships The Next or same work day — **Add 25%**

2FDS • ORDER BY 3pm, Order ships in 1-2 work days— **Add 10%**

SPECIAL SHAPES SHIPPED IN 3-10 days

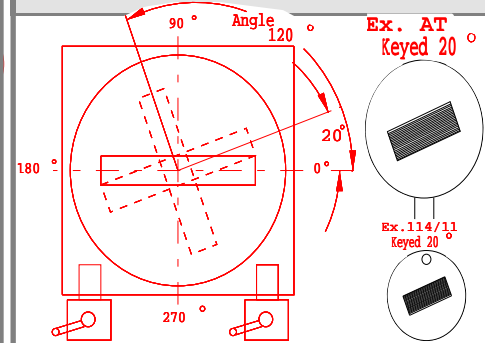


Guaranteed Shipment (Expediting)

3FDS "FIRM DELIVERY SERVICE"
Order By 3pm, to ship in 3 Work Days

5FDS "FIRM DELIVERY SERVICE"
Order by 3pm, to ship in 5 Work Days

Shapes on Angles or Extra Key Locations. *Die View*



Visualize location key of tool as it would load into turret. Start with length of shape horizontal Length points to 0°

Rotate shape, not location key.

A sketch accompanying your order ensures keying as required!

Note: Other Manufacturers ordering diagrams may differ from C.E.'s!

Punch Coatings:

TiN Titanium Nitrite or TiCN Titanium Carbon-Nitrite
See Page 3 For Pricing

ENSURE YOUR TOOLS ARE SHARPENED PROPERLY

If facilities aren't available to properly care for your tooling, CE offers it's customers a

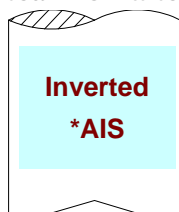
PUNCH Sharpening Cost <i>FLAT (NO SHEAR)</i>	Qty 1-3	Qty 4-10	Qty 11-25
Max. diagonal Up to 2-1/4"			
TIP DIAGONAL 2-1/4 TO 5"			
TIP DIAGONAL 5" TO 8"			

DIE SHARPENING COSTS	Qty 1-3	Qty 4-10	Qty 11-25
O.D. UP TO 2-1/4" DIAMETER			
O.D. OVER 2-1/4 TO 6-1/2"			
O.D. > 6" - 11" DIAMETER			

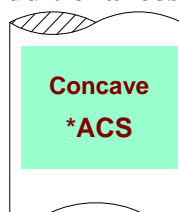
Add A Shear To Punch: Additional cost to standard punch price. Call For Pricing.



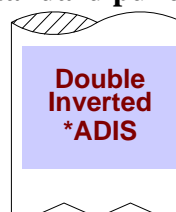
Roof Top
***ARTS**



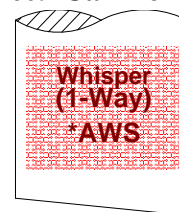
Inverted
***AIS**



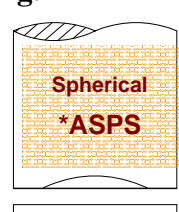
Concave
***ACS**



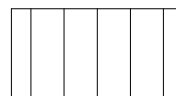
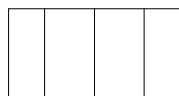
Double Inverted
***ADIS**



Whisper (1-Way)
***AWS**



Spherical
***ASPS**



C.E. TOOLING, INC.

EHRT Punches, Guides and Dies

Pricing is for Punch Tip Sizes .093" (2.3mm) to 1.000" (25.39mm)

EHRT PUNCHES

Mfg. from HIGH SPEED

Punch Body Shank	RANGE DIAGONALLY Tip Sizes of .093(2,3mm) &>	ROUNDS CATALOG CODE	PRICE .093/2,3 &>	SHAPED 10 different shapes	PRICE .093/2,3 &>
8mm	.093-.315 (2,4-8,0mm)	EH8-Pr		EH8-Ps	
12mm	.093 -.4724 (2,4-12,0mm)	EH12-Pr		TR12-Ps	
16mm	.093-.630 (2,4-16,0mm)	EH16-Pr		EH16-Ps	
20mm	.093-.7874" (2,4-20,0mm)	EH20-Pr		EH20-Ps	
25mm	.093-.984" (2,4-25,0mm)	EH25-Pr		EH5-Ps	
32mm	.093-1.260" (2,4-32,0mm)	EH32-Pr		EH32-Ps	
40mm	.093-1.575" (2,4-40,0mm)	EH40-D		EH40-Ps	



Coatings: TiN Titanium Nitrite/TiCN Titanium Carbon-Nitrite/Alpha 1-3 PCS +\$32.00ea 4-9 PC + \$25ea 12+ \$18ea.

EHRT Fitted GUIDES Mfg. from D2 18% Chrome Tool Steel

	RANGE DIAGONALLY Tip Sizes of .093(2,3mm) &>	ROUNDS CATALOG CODE	PRICE .093/2,3 &>	SHAPED 10 different shapes	PRICE .093/2,3 &>
	.093-1.654 (2,4-42,0mm)	EH-Gr		EH-Gs	

45mm dia. X 16mm thick
6mm dowel location pin

EHRT DIE

Mfg. from D2 18% Chrome Tool Steel

	RANGE DIAGONALLY Tip Sizes of .093(2,3mm) &>	ROUNDS CATALOG CODE	PRICE .093/2,3 &>	SHAPED 10 different shapes	PRICE .093/2,3 &>
2mm land, then 2° slug relief	.093-1.654 (2,4-42,0mm)	EH-Dr		EH8-Ss	

60mm dia. X 20,5mm thick
Key 12w X 6d

Shape Die and Guides are keyed @ 0° for 0 & 90°. Extra Keys + \$65.00, any angle

**FABRICATING TOOLS
and Accessories for most
Punching, Bending and
Shearing Equipment**



www.cetooling.com

C.E. TOOLING, INC.

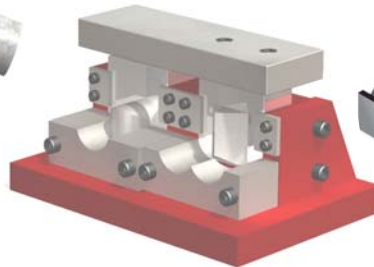
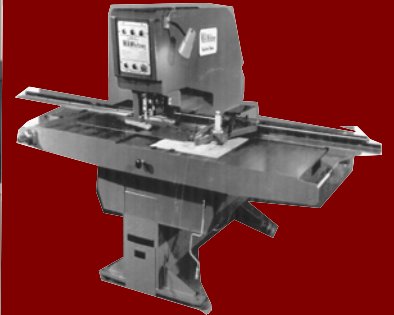


C.E. TOOLING, INC.

**FORMING AROUND
THE WORLD**



**MANUFACTURING TURRET PRESS
TOOLING SINCE 1966**



CETOOLING FACTORY
2560 W. Brooks Ave.
N. Las Vegas NV 89032

sales@Cetooling.com

Tel. 702 736-2958

www.Cetooling.com

Fax 702 736-3038



**LOCAL SALES REPRESENTATIVE
DISTRIBUTORS**

